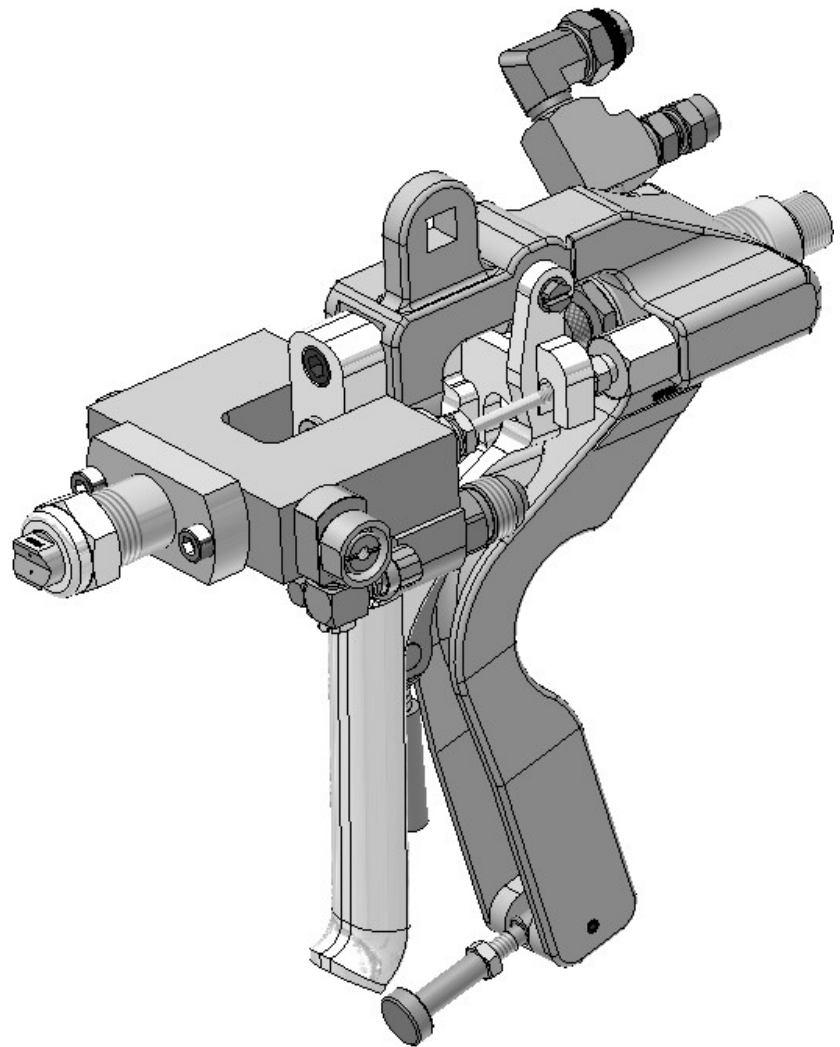


# Duramax Gun

## Manual

This manual is applicable to the following models:

- DMX-3000
- DMX-3000-A
- DMX-3000-ITW
- DMX-3000-SIG
- DMX-3000-ST
- DMX-3000-W
- DMX-3000-W-SIG



Rev. February 2019



**CORPORATE HEADQUARTERS**

2030 Falling Waters Rd, Suite 350, Knoxville, TN 37922 · USA · Tel: (865) 686-5670

**DISTRIBUTION AND PURCHASING**

642 Barbrow Ln, Knoxville, TN 37932 · USA · Tel: (865) 684-4416

**TECHNOLOGY CENTER AND MANUFACTURING**

1862 Ives Ave, Kent, WA 98032 · USA · Tel (253) 854-2660 · Fax (253) 854-1666

E-mail: [info@mvpind.com](mailto:info@mvpind.com)

For a list of international distributors, visit our website at :

[www.mvpind.com/mvp-international](http://www.mvpind.com/mvp-international)

*Use of this product confirms that Magnum Venus Products, Inc.'s standard terms and conditions of sale apply.*

---

# Table of Contents

<b>Section</b>	<b>Page</b>
• <b>Table of Contents</b>	<b>3</b>
• <b>Safety &amp; Warning Information</b>	<b>4</b>
• <b>Introduction</b>	<b>15</b>
• <b>Disassembling the Gun</b>	<b>16</b>
• <b>Reassembling the Gun</b>	<b>21</b>
• <b>Adjusting Needles</b>	<b>24</b>
• <b>Troubleshooting</b>	<b>24</b>
• <b>Parts Information</b>	<b>27</b>

# Safety & Warning Information

## Warnings

Due to the vast number of chemicals that could be used and their varying chemical reactions, the buyer and user of this equipment should determine all factors relating to the fluids used, including any of the potential hazards involved. Particular inquiry and investigation should be made into potential dangers relating to toxic fumes, fires, explosions, reaction times, and exposure of human beings to the individual components or their resultant mixtures. MVP assumes no responsibility for loss, damage, expense or claims for bodily injury or property damage, direct or consequential, arising from the use of such chemical components.

The end user is responsible for ensuring that the end product or system complies with all the relevant laws in the country where it is to be used and that all documentation is adhered to.

### Recommended Occupational Safety & Health Act (OSHA) Documentation:

- 1910.94                      Pertaining to ventilation
- 1910.106                    Pertaining to flammable liquids
- 1910.107                    Pertaining to spray finishing operations, particularly paragraph (m), Organic Peroxides and Dual Component Coatings

For Additional information, contact the Occupational Safety and Health Administration (OSHA) at <https://www.osha.gov/about.html>.

### Recommended National Fire Protection Association (NFPA) Documentation:

- NFPA No.33 Chapter 14                      Organic Peroxides and Dual Component Materials
- NFPA No. 63                                    Dust Explosion Prevention
- NFPA No. 70                                    National Electrical Code
- NFPA No. 77                                    Static Electricity
- NFPA No. 91                                    Blower and Exhaust System
- NFPA No. 654                                    Plastics Industry Dust Hazards

**Fire Extinguisher** – code ABC, rating number 4a60bc using Extinguishing Media –Foam, Carbon Dioxide, Dry Chemical, Water Fog, is recommended for this product and applications.

The following general warnings and guidelines are for the setup, use, grounding, maintenance, and repair of equipment. Additional product-specific warnings may be found throughout this manual as applicable. Please contact your nearest MVP Technical Service Representative if additional information is needed.

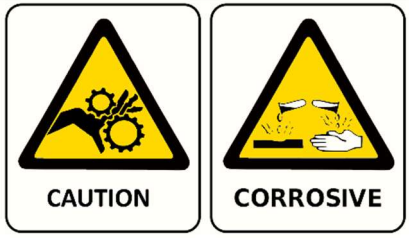
**Safety Precautions**

- Avoid skin contact and inhalation of all chemicals.
- Review Material Safety Data Sheet (MSDS) to promote the safe handling of chemicals in use.
- Restrict the use of all chemicals to designated areas with good ventilation.
- Chemicals are flammable and reactive.
- Noxious fumes released when combusted.
- Operate equipment in a ventilated environment only.
- Uncured liquid resins are highly flammable unless specifically labeled otherwise.
- Cured laminate, accumulations of overspray, and laminate sandings are highly combustible.
- Do not operate or move electrical equipment when flammable fumes are present.
- Ground all equipment.
- If a spark is seen or felt, immediately halt operation. Do not operate the equipment until the issue has been identified and repaired.
- Contaminated catalyst may cause fire or explosion.
- Containers may explode if exposed to fire / heat.
- Use and store chemicals away from heat, flames, and sparks.
- Do not smoke in work areas or near stored chemicals.
- Do not mix Methyl Ethyl Ketone Peroxide (MEKP) with materials other than polyethylene.
- Do not dilute MEKP.
- Keep food and drink away from work area.



**Physical Hazards**

- Never look directly into the spray gun fluid tip. Serious injury or death can result.
- Never aim the spray gun at or near another person. Serious injury or death can result.
- Chemical compounds can be severely irritating to the eyes and skin.
- Inhalation, ingestion, or injection may damage internal organs and lead to pulmonary disorders, cancers, lymphomas, and other diseases or health conditions.
- Other potential health effects include: irritation of the eyes and upper respiratory tract, headache, light-headedness, dizziness, confusion, drowsiness, nausea, vomiting, and occasionally abdominal pain.
- Eye contact: Immediately flush with water for at least 15 minutes and seek immediate medical attention.
- Skin Contact: Immediately wash with soap and water and seek immediate medical attention.
- Inhalation: Move the person to fresh air and seek immediate medical attention.
- Do not remove shields, covers, or safety features on equipment that is in use.
- Never place fingers, hands, or any body part near or directly in front of the spray gun fluid tip. The force of the liquid as it exits the spray tip can shoot liquid through the skin.
- Keep hands and body parts away from any moving equipment or components.
- Do not stand under plunger
- An improperly loaded drum may lead to an imbalance, causing a unit to tip over



**Personal Protective Equipment (PPE)**

- MVP recommends the use of personal safety equipment with all products in our catalog.
- Wear safety goggles, hearing protection, a respirator, and chemical resistant gloves.
- Wear long sleeve shirts or jackets and pants to minimize skin exposure.
- PPE should be worn by operators and service technicians to reduce the risk of injury.



For Additional information, contact the Occupational Safety and Health Administration (OSHA). <https://www.osha.gov/about.html>

## Symbol Definitions



Indicates the risk of contact with chemicals that are hazardous, which may lead to injury or death.



Indicates the risk of contact with voltage / amperage that may lead to serious injury or death.



Indicates that the materials being used are susceptible to combustion.



Indicates the risk of contact with moving components that may lead to serious injury or death.



Indicates that the system or component should be grounded before proceeding with use or repair.



Indicates the use of lit cigarettes or cigars is prohibited, because the materials being used are susceptible to combustion.



Indicates that the materials and/or the process being performed can lead to ignition and explosion.



A recommendation for the use of Personal Protective Equipment (PPE) before using or repairing the product.

## Polymer Matrix Materials: Advanced Composites

Potential health hazards associated with the use of advanced composites can be controlled through the implementation of an effective industrial hygiene and safety program.

[https://www.osha.gov/dts/osta/otm/otm\\_iii/otm\\_iii\\_1.html#t\\_iii:1\\_1](https://www.osha.gov/dts/osta/otm/otm_iii/otm_iii_1.html#t_iii:1_1)

<b>Resins</b>		
<b>Composite Component</b>	<b>Organ System Target (Possible Target)</b>	<b>Known (Possible) Health Effect</b>
Epoxy resins	Skin, lungs, eyes	Contact and allergic dermatitis, conjunctivitis
Polyurethane resins	Lungs, skin, eyes	Respiratory sensitization, contact dermatitis, conjunctivitis
Phenol formaldehyde	Skin, lungs, eyes	As above (potential carcinogen)
Bismaleimides (BMI)	Skin, lungs, eyes	As above (potential carcinogen)
Polyamides	Skin, lungs, eyes	As above (potential carcinogen)
<b>Reinforcing materials</b>		
<b>Composite Component</b>	<b>Organ System Target (Possible Target)</b>	<b>Known (Possible) Health Effect</b>
Aramid fibers	Skin (lungs)	Skin and respiratory irritation, contact dermatitis (chronic interstitial lung disease)
Carbon/graphite fibers	Skin (lungs)	As noted for aramid fibers
Glass fibers (continuous filament)	Skin (lungs)	As noted for aramid fibers
<b>Hardeners and curing agents</b>		
<b>Composite Component</b>	<b>Organ System Target (Possible Target)</b>	<b>Known (Possible) Health Effect</b>
Diaminodiphenylsulfone	N/A	No known effects with workplace exposure
Methylenedianiline	Liver, skin	Hepatotoxicity, suspect human carcinogen
<b>Other aromatic amines</b>		
<b>Composite Component</b>	<b>Organ System Target (Possible Target)</b>	<b>Known (Possible) Health Effect</b>
Meta-phenylenediamine (MPDA)	Liver, skin (kidney, bladder)	Hepatitis, contact dermatitis (kidney and bladder cancer)
Aliphatic and cyclo-aliphatic amines	Eyes, skin	Severe irritation, contact dermatitis
Polyaminoamide	Eyes, skin	Irritation (sensitization)
Anhydride	Eyes, lungs, skin	Severe eye and skin irritation, respiratory sensitization, contact dermatitis



## Catalyst - Methyl Ethyl Ketone Peroxide (MEKP)

MEKP is among the more hazardous materials found in commercial channels. The safe handling of the “unstable (reactive)” chemicals presents a definite challenge to the plastics industry. The highly reactive property which makes MEKP valuable to the plastics industry in producing the curing reaction of polyester resins also produces the hazards which require great care and caution in its storage, transportation, handling, processing and disposal. MEKP is a single chemical. Various polymeric forms may exist which are more or less hazardous with respect to each other. These differences may arise not only from different molecular structures (all are, nevertheless, called “MEKP”) and from possible trace impurities left from the manufacture of the chemicals, but may also arise by contamination of MEKP with other materials in its storage or use. Even a small amount of contamination with acetone, for instance, may produce an extremely shock-sensitive and explosive compound.



### **WARNING**

***Contamination with promoters, materials containing promoters (such as laminate sandings), or with any readily oxidizing material (such as brass or iron) will cause exothermic redox reactions which can be explosive in nature. Heat applied to MEKP or heat buildup from contamination reactions can cause the material to reach its Self-Accelerating Decomposition Temperature (SADT).***

Researchers have reported measuring pressure rates-of-rise well over 100,000 psi per second when certain MEKP's reach their SADT. For comparison, the highest-pressure rate-of-rise listed in NFPA Bulletin NO.68, “Explosion Venting”, is 12,000 psi per second for an explosion of 12% acetylene and air. The maximum value listed for a hydrogen explosion is 10,000 psi per second. Some forms of MEKP, if allowed to reach their SADT, will burst even an open topped container. This suggests that it is not possible to design a relief valve to vent this order of magnitude of pressure rate-of-rise. The user should be aware that any closed container, be it a pressure vessel, surge chamber, or pressure accumulator, could explode under certain conditions. There is no engineering substitute for care by the user in handling organic peroxide catalysts. If, at any time, the pressure relieve valve on top of the catalyst tank should vent, the area should be evacuated at once and the fire department called. The venting could be the first indication of a heat, and therefore, pressure build-up that could eventually lead to an explosion. Moreover, if a catalyst tank is sufficiently full when the pressure relief valve vents, some catalyst may spray out, which could cause eye injury. For this reason, and many others, anyone whose job puts them in an area where this vented spray might go, should always wear full eye protection even when laminating operations are not taking place.

Safety in handling MEKP depends to a great extent on employee education, proper safety instructions, and safe use of the chemicals and equipment. Workers should be thoroughly informed of the hazards that may result from improper handling of MEKP, especially regarding contamination, heat, friction and impact. They should be thoroughly instructed regarding the proper action to be taken in the storage, use, and disposal of MEKP and other hazardous materials used in the laminating operation. In addition, users should make every effort to:

- Store MEKP in a cool, dry place in original containers away from direct sunlight and away from other chemicals.
- Keep MEKP away from heat, sparks, and open flames.
- Prevent contamination or MEKP with other materials, including polyester over spray and sandings, polymerization accelerators and promoters, brass, aluminum, and non-stainless steels.

- Never add MEKP to anything that is hot, since explosive decomposition may result.
- Avoid contact with skin, eyes, and clothing. Protective equipment should be worn at all times. During clean-up of spilled MEKP, personal safety equipment, gloves, and eye protection must be worn. Firefighting equipment should be at hand and ready.
- Avoid spillage, which can heat up to the point of self-ignition.
- Repair any leaks discovered in the catalyst system immediately, and clean-up the leaked catalyst at once in accordance with the catalyst manufacturer's instructions.
- Use only original equipment or equivalent parts from Magnum Venus Products in the catalyst system (i.e.: hoses, fitting, etc.) because a dangerous chemical reaction may result between substituted parts and MEKP.
- Catalyst accumulated from the purging of hoses or the measurement of fluid output deliveries should never be returned to the supply tank, such catalyst should be diluted with copious quantities of clean water and disposed of in accordance with the catalyst manufacturer's instructions.

The extent to which the user is successful in accomplishing these ends and any additional recommendations by the catalyst manufacturer determines largely the safety that will be present in his operation.

## Clean-Up Solvents and Resin Diluents



### **WARNING**

***A hazardous situation may be present in your pressurized fluid system! Hydro carbon solvents can cause an explosion when used with aluminum or galvanized components in a closed (pressurized) fluid system (pump, heaters, filters, valves, spray guns, tanks, etc.). An explosion could cause serious injury, death, and/or substantial property damage. Cleaning agents, coatings, paints, etc. may contain Halogenated Hydrocarbon solvents. Some Magnum Venus Products spray equipment includes aluminum or galvanized components and will be affected by Halogenated Hydrocarbon solvents.***

There are three key elements to the Halogenated Hydrocarbon (HHC) solvent hazard.

- |    |   |  |
|----|---|--|
| 1. | The presence of HHC solvents.               | 1,1,1 – Trichloroethane and Methylene Chloride are the most common of these solvents. However, other HHC solvents are suspect if used; either as part of paint or adhesives formulation, or for clean-up flushing.   |
| 2. | Aluminum or Galvanized Parts.               | Most handling equipment contains these elements. In contact with these metals, HHC solvents could generate a corrosive reaction of a catalytic nature.   |
| 3. | Equipment capable of withstanding pressure. | When HHC solvent contact aluminum or galvanized parts inside a closed container such as a pump, spray gun, or fluid handling system, the chemical reaction can, over time, result in a build-up of heat and pressure, which can reach explosive proportions. When all three elements are present, the result can be an extremely violent explosion. The reaction can be sustained with very little aluminum or galvanized metal; any amount of aluminum is too much. |

- The reaction is unpredictable. Prior use of an HHC solvent without incident (corrosion or explosion) does NOT mean that such use is safe. These solvents can be dangerous alone (as a clean-up or flushing agent) or when used as a component or a coating material. There is no known inhibitor that is effective under all circumstances. Mixing HHC solvents with other materials or solvents such as MEKP, alcohol, or toluene may render the inhibitors ineffective.
- The use of reclaimed solvents is particularly hazardous. Reclaimers may not add any inhibitors. The possible presence of water in reclaimed solvents could also feed the reaction.
- Anodized or other oxide coatings cannot be relied upon to prevent the explosive reaction. Such coatings can be worn, cracked, scratched, or too thin to prevent contact. There is no known way to make oxide coatings or to employ aluminum alloys to safely prevent the chemical reaction under all circumstances.
- Several solvent suppliers have recently begun promoting HHC solvents for use in coating systems. The increasing use of HHC solvents is increasing the risk. Because of their exemption from many state implementation plans as Volatile Organic Compounds (VOCs), their low flammability hazard, and their not being classified as toxic or carcinogenic substances, HHC solvents are very desirable in many respects.



### **WARNING**

***Do not use Halogenated Hydrocarbon (HHC) solvents in pressurized fluid systems having aluminum or galvanized wetted parts. Magnum Venus Products is aware of NO stabilizers available to prevent HHC solvents from reaction under all conditions with aluminum components in closed fluid systems. HHC solvents are dangerous when used with aluminum components in a closed fluid system.***

- Consult your material supplier to determine whether your solvent or coating contains Halogenated Hydrocarbon solvents.
- Magnum Venus Products recommends that you contact your solvent supplier regarding the best non-flammable clean-up solvent with the heat toxicity for your application.
- If, however, you find it necessary to use flammable solvents, they must be kept in approved, electrically grounded containers.
- Bulk solvent should be stored in a well-ventilated, separate building, 50 feet away from your main plant.
- You should only allow enough solvent for one day's use in your laminating area.
- NO SMOKING signs must be posted and observed in all areas of storage or where solvents and other flammable materials are used.
- Adequate ventilation (as covered in OSHA Section 1910.94 and NFPA No.91) is important wherever solvents are stored or used, to minimize, confine and exhaust the solvent vapors.
- Solvents should be handled in accordance with OSHA Section 1910.106 and 1910.107.

## Catalyst Diluents

Magnum Venus Products spray-up and gel-coat systems currently produced are designed so that catalyst diluents are not required. Magnum Venus Products therefore recommends that diluents not be used to avoid possible contamination which could lead to an explosion due to the handling and mixing of MEKP and diluents. In addition, it eliminates any problems from the diluent being contaminated through rust particles in drums, poor quality control on the part of the diluents suppliers, or any other reason. If diluents are absolutely required, contact your catalyst supplier and follow his instructions explicitly. Preferably the supplier should premix the catalyst to prevent possible “on the job” contamination while mixing.



### **WARNING**

***If diluents are not used, remember that catalyst spillage and gun, hose, and packing leaks are potentially more hazardous since each drop contains a higher concentration of catalyst and will therefore react more quickly with overspray and the leak.***

## Cured Laminate, Overspray and Laminate Sandings Accumulation

- Remove all accumulations of overspray, Fiberglass Reinforced Plastic (FRP) sandings, etc. from the building as they occur. If this waste is allowed to build up, spillage of catalyst is more likely to start a fire; in addition, the fire would burn hotter and longer.
- Floor coverings, if used, should be non-combustible.
- Spilled or leaked catalyst may cause a fire if it comes in contact with an FRP product, oversprayed chop or resin, FRP sandings or any other material with MEKP.

To prevent spillage and leakage, you should:

- |  |   |
|--|---|
| 1. Maintain your Magnum Venus Products System.   | Check the gun several times daily for catalyst and resin packing or valve leaks. REPAIR ALL LEAKS IMMEDIATELY.  |
| 2. Never leave the gun hanging over or lying inside the mold.  | A catalyst leak in this situation would certainly damage the part, possibly the mold, and may cause a fire.   |
| 3. Inspect resin and catalyst hoses daily for wear or stress at the entry and exits of the boom sections and at the hose and fittings. | Replace if wear or weakness is evident or suspected.  |
| 4. Arrange the hoses and fiberglass roving guides so that the fiberglass strands DO NOT rub against any of the hoses at any point.     | If allowed to rub, the hose will be cut through, causing a hazardous leakage of material which could increase the danger of fire. Also, the material may spew onto personnel in the area. |

## Toxicity of Chemicals

- Magnum Venus Products recommends that you consult OSHA Sections 1910.94, 1910.106, 1910.107 and NFPA No.33, Chapter 14, and NFPA No.91.
- Contact your chemical supplier(s) and determine the toxicity of the various chemicals used as well as the best methods to prevent injury, irritation and danger to personnel.
- Also determine the best methods of first aid treatment for each chemical used in your plant.

## Equipment Safety

Magnum Venus Products suggest that personal safety equipment such as EYE GOGGLES, GLOVES, EAR PROTECTION, and RESPIRATORS be worn when servicing or operating this equipment. Ear protection should be worn when operating a fiberglass chopper to protect against hearing loss since noise levels can be as high as 116 dB (decibels). This equipment should only be operated or serviced by technically trained personnel!



### CAUTION

***Never place fingers, hands, or any body part near or directly in front of the spray gun fluid tip. The force of the liquid as it exits the spray tip can cause serious injury by shooting liquid through the skin. NEVER LOOK DIRECTLY INTO THE GUN SPRAY TIP OR POINT THE GUN AT OR NEAR ANOTHER PERSON OR AN ANIMAL.***



### DANGER

***Contaminated catalyst may cause fire or explosion. Before working on the catalyst pump or catalyst accumulator, wash hands and tools thoroughly. Be sure work area is free from dirt, grease, or resin. Clean catalyst system components with clean water daily.***



### DANGER

***Eye, skin, and respiration hazard. The catalyst MEKP may cause blindness, skin irritation, or breathing difficulty. Keep hands away from face. Keep food and drink away from work area.***

## Treatment of Chemical Injuries



### CAUTION

***Refer to your catalyst manufacturer's safety information regarding the safe handling and storage of catalyst. Wear appropriate safety equipment as recommended.***

Great care should be used in handling the chemicals (resins, catalyst and solvents) used in polyester systems. Such chemicals should be treated as if they hurt your skin and eyes and as if they are poison to your body. For this reason, Magnum Venus Products recommends the use of protective clothing and eye wear in using polyester systems. However, users should be prepared in the event of such an injury.

**Precautions include:**

1. Know precisely what chemicals you are using and obtain information from your chemical supplier on what to do in the event the chemical gets onto your skin or into the eyes, or if swallowed.
2. Keep this information together and easily available so that it may be used by those administering first aid or treating the injured person.
3. Be sure the information from your chemical supplier includes instructions on how to treat any toxic effects the chemicals have.

**WARNING**

***Contact your doctor immediately in the event of an injury. If the product's MSDS includes first aid instructions, administer first aid immediately after contacting a doctor.***

Fast treatment of the outer skin and eyes that contact chemicals generally includes immediate and thorough washing of the exposed skin and immediate and continuous flushing of the eyes with lots of clean water for at least 15 minutes or more. These general instructions of first aid treatment may be incorrect for some chemicals; you must know the chemicals and treatment before an accident occurs. Treatment for swallowing a chemical frequently depends upon the nature of the chemical.

**Emergency Stop Procedure**

In an emergency, follow these steps to stop a system:

1. The ball valve located where the air enters the power head of the resin pump, should be moved to the "OFF" or closed position.

**Note**     ***The "open" or "on" position is when the ball valve handle is parallel (in line) with the ball valve body. The "closed" or "off" position is when the ball valve handle is perpendicular (across) the ball valve body.***

2. Turn all system regulators to the "OFF" position (counter-clockwise) position.
3. Verify / secure the catalyst relief line, located on the catalyst relief valve.
4. Verify / secure the resin return line, located on the resin filter.
5. Place a container under the resin pump ball valve to catch ejected resin.
6. Locate the ball valve on the resin pump.
7. Rotate the ball valve 90 degrees to the "On" or open position.

**Grounding**

Grounding an object means providing an adequate path for the flow of the electrical charge from the object to the ground. An adequate path is one that permits charge to flow from the object fast enough that it will not accumulate to the extent that a spark can be formed. It is not possible to define exactly what will be an adequate path under all conditions since it depends on many variables. In any event, the grounding means should have the lowest possible electrical resistance.

Grounding straps should be installed on all loose conductive objects in the spraying area. This includes material containers and equipment. Magnum Venus Products recommends grounding straps be made of AWG No.18 stranded wire as a minimum and the larger wire be used where possible. NFPA Bulletin No77 states that the electrical resistance of such a leakage path may be as low as 1 meg ohm (10 ohms) but that resistance as high as 10,000 meg ohms will produce an adequate leakage path in some cases.

**CAUTION**



***Whenever flammable or combustible liquids are transferred from one container to another, or from one container to the equipment, both containers or container and equipment shall be effectively bonded and grounded to dissipate static electricity. For further information, see National Fire Protection Association (NFPA) 77, titled “Recommended Practice on Static Electrical”. Refer especially to section 7-7 titled “Spray Application of Flammable and Combustible Materials”.***

## Introduction

The MVP Duramax gun incorporates Rapid Access Design (RAD). With fewer part and maintenance friendly access, routine replacements take only minutes. This rugged gun features a carbide needle and seat (standard), and is the only gun on the market with built-in shut off valves for resin and catalyst. Now you can perform maintenance without the need to drain pressure or remove hoses.

To use the built-in shut off valves, tighten the catalyst and resin shut off needles into the fittings to prevent the material from leaking through into the gun head. We still recommend relieving excess pressure by momentarily opening the catalyst recirculation valve and resin dump valve before working on the gun.

This manual provides information for the operation, maintenance, and simple repair of the MVP Duramax Gun. The following procedures are included:

- Step-by-step assembly and disassembly
- Troubleshooting information



Please read this manual carefully and retain for future reference. Follow the steps in the order given, otherwise you may damage the equipment or injure yourself.

## Assemblies

This manual covers the following assemblies:

- |   |  |
|---|--|
| <input type="checkbox"/> DMX-3000       | DURAMAX GUN ASSEMBLY                       |
| <input type="checkbox"/> DMX-3000-A     | AUTO DURAMAX GUN ASSEMBLY                  |
| <input type="checkbox"/> DMX-3000-ITW   | DURAMAX GUN ASSEMBLY – REVERSIBLE TIP      |
| <input type="checkbox"/> DMX-3000-SIG   | DURAMAX GUN ASSEMBLY – WITH AIR SIGNAL     |
| <input type="checkbox"/> DMX-3000-ST    | DURAMAX GUN ASSEMBLY – FIT MIX CHAMBER     |
| <input type="checkbox"/> DMX-3000-W     | DURAMAX GUN ASSEMBLY – WETOUT GUN          |
| <input type="checkbox"/> DMX-3000-W-SIG | DURAMAX GUN ASSEMBLY – WETOUT & AIR SIGNAL |

**CAUTION**

*Always wear proper safety equipment (glasses, gloves, respirator, etc.) when working with dispensing equipment and before startup of the unit. Refer to and follow the requirements of the Material Safety Data Sheets (MSDS) supplied by your material manufacturer(s).*

## Disassembling the Gun

### During Disassembly

As you disassemble the equipment, lay out the components on a clean surface in the correct order and direction to assist with reassembly later.

**WARNING**

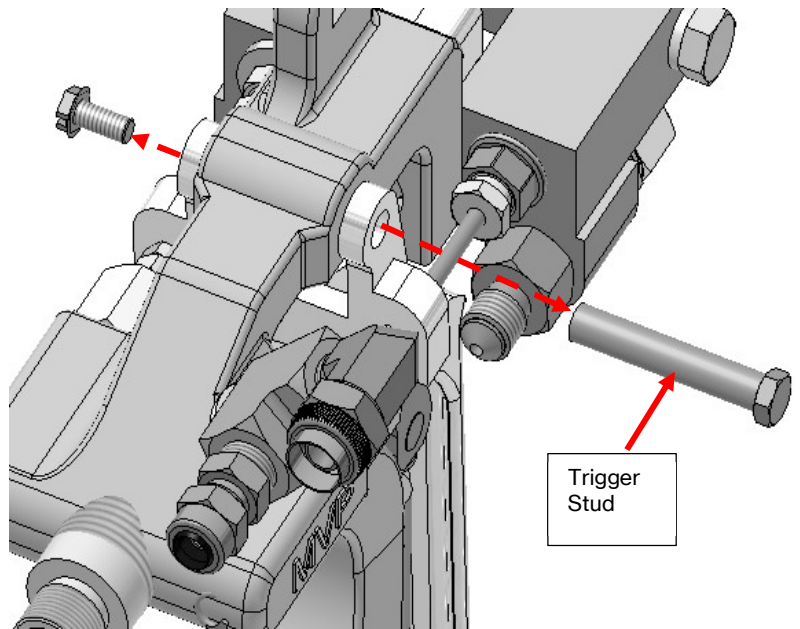
*Remove excess fluid and air pressure from the system before disconnecting and working on the gun.*

**CAUTION**

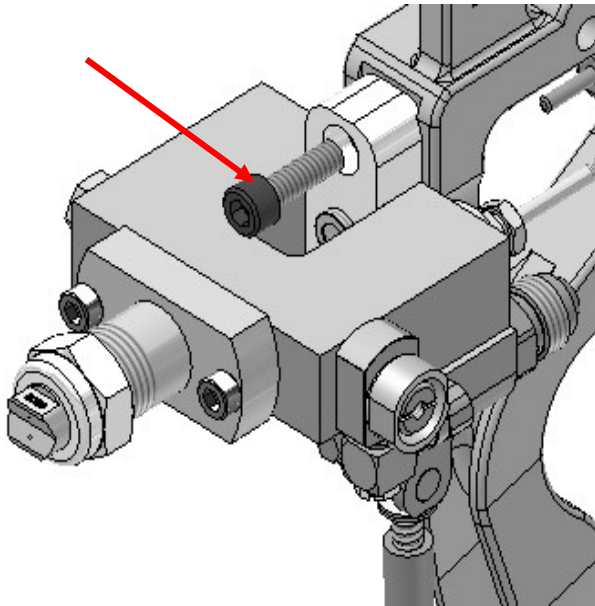
*Be careful not to bend the catalyst and resin needles to prevent damage to the shut off valves.*

### Initial Disassembly

1. Release catalyst, resin, and flush pressure from the system.
2. Remove catalyst, resin, and flush lines from the gun block assembly.
3. Remove the chopper assembly from the gun handle (if applicable).
4. Remove the hex screw from the trigger stud.
5. Remove the trigger stud from the gun handle and trigger.
6. Remove the trigger from the gun assembly.
7. To remove the gun block assembly from the gun handle, remove the cap screw located at the back center just above the gun block assembly.



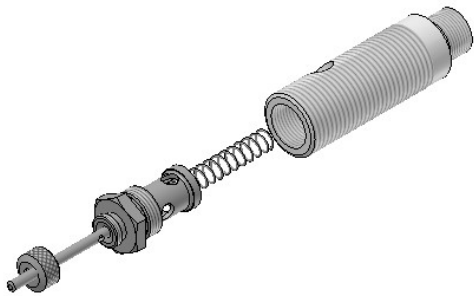
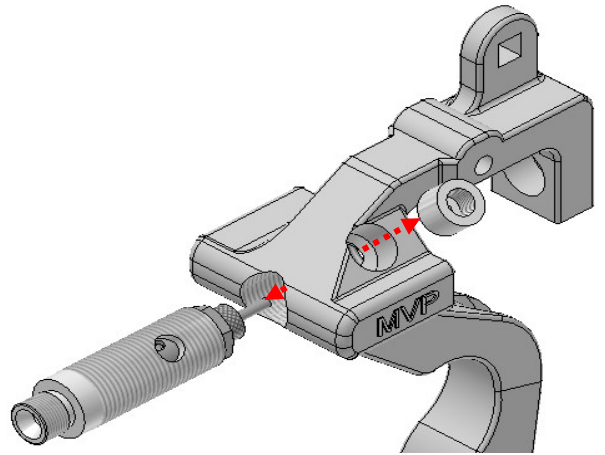




You now have two components, the gun block assembly and the gun handle assembly.

## Disassemble Gun Handle

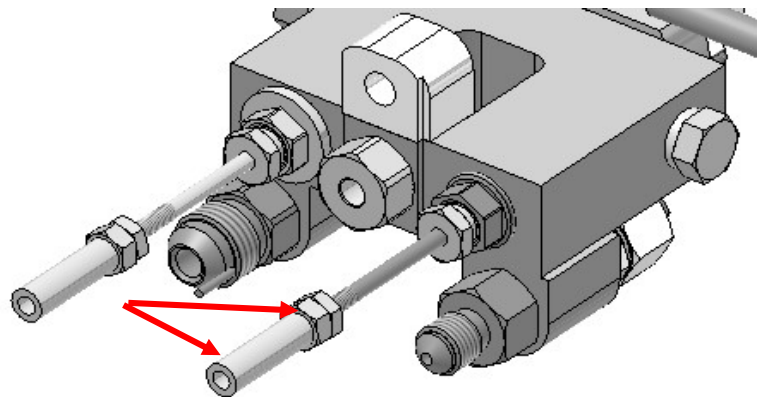
8. Remove the spring retainers and springs from the handle.
9. Remove the valve body assembly from the handle.
10. Remove the spring and poppet assembly.
11. Unscrew the retainer from the valve body.



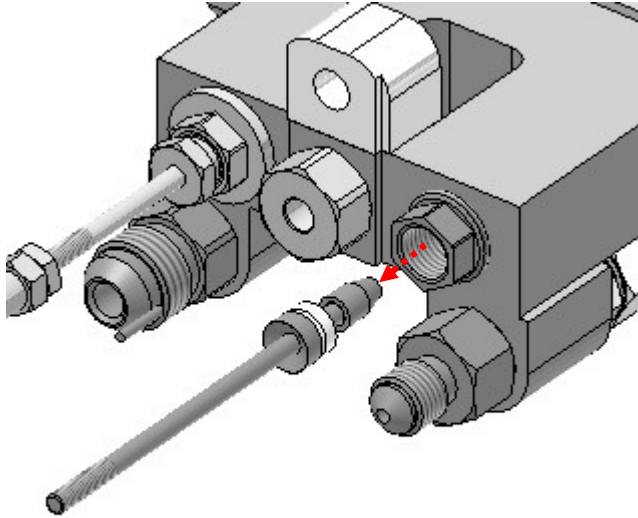
12. Remove the O-ring.

## Disassemble Gun Head

13. Remove the needle guide and jam nut from the catalyst piston needle.
14. Unscrew the packing nut from the catalyst side of the gun block.

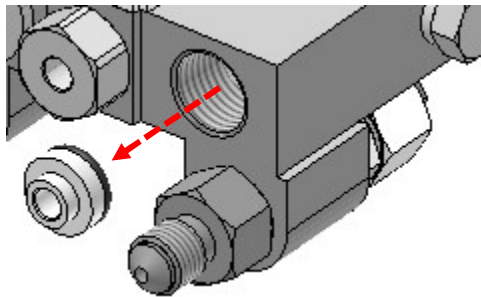
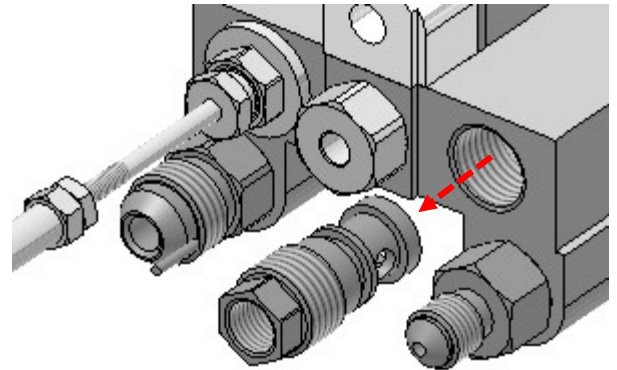


15. Pull the catalyst needle, packing seal, and seal retainer from the needle housing.



16. Unscrew the catalyst needle housing from the gun head.

17. Remove catalyst seat and O-ring from the gun block.



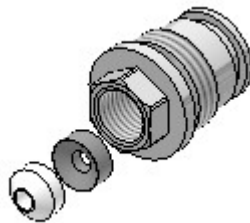
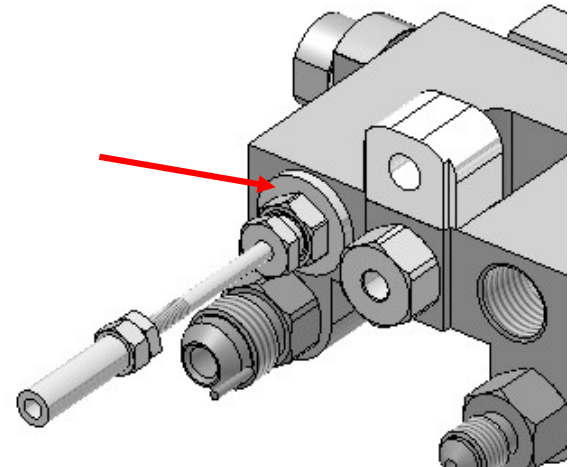
18. Unscrew the resin seal housing from the gun head.

19. Remove the needle guide and jam nut from the needle.

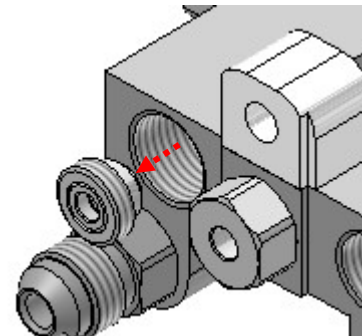
20. Unscrew the packing nut from the seal housing.

21. Pull the needle from the seal housing.

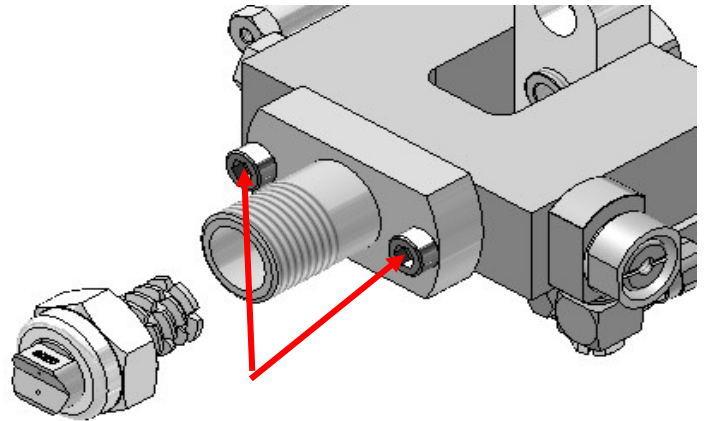
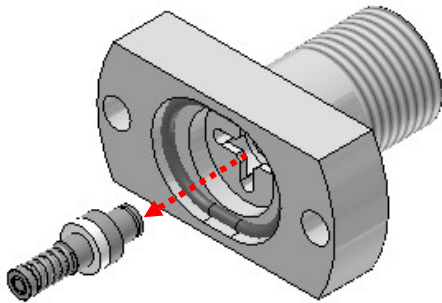
22. Remove packing seal and seal retainer from seal housing.



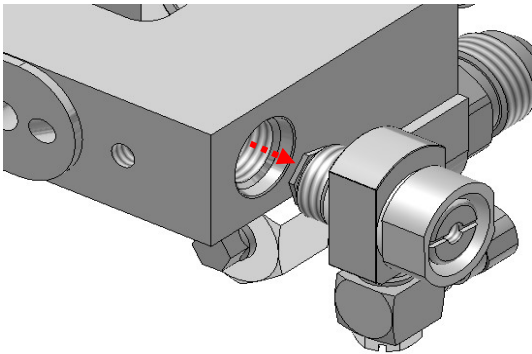
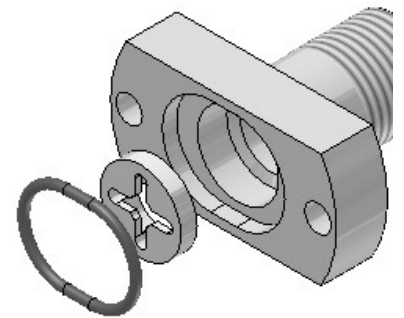
23. Unscrew the carbide seat from the gun head using an Allen wrench.



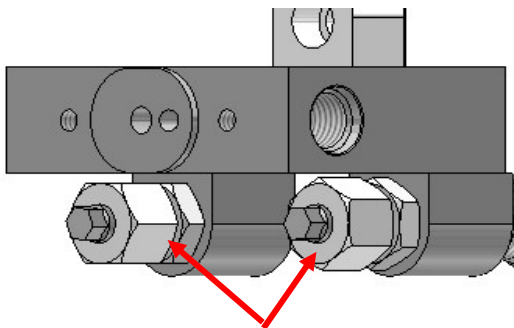
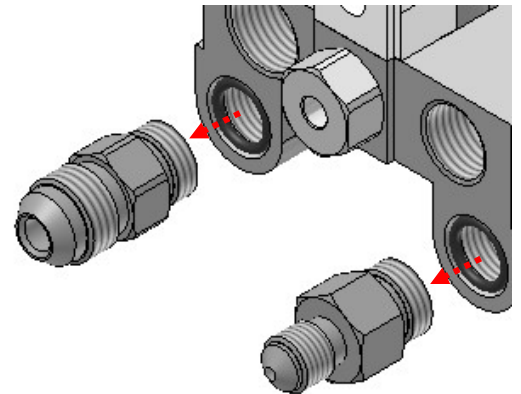
24. Remove the O-ring from the opening in the gun block.
25. Remove the nozzle cap, nozzle, and turbulent mixer.
26. Remove the two cap screws and remove the mix housing.
27. Take the catalyst injector out of the distribution ring.



28. Remove the elongated O-ring and the distribution ring from the mix housing.
29. Remove the flush valve assembly from the side of the gun block.



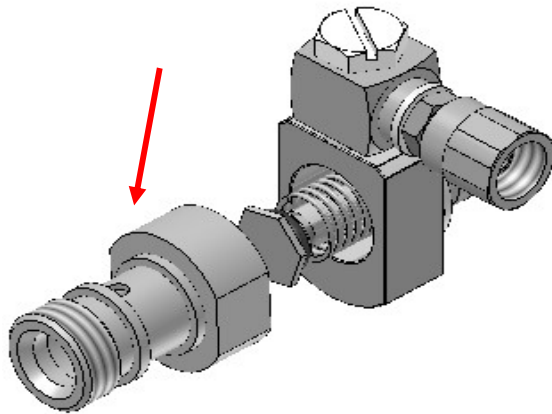
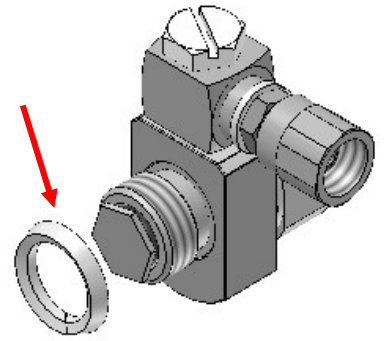
30. Remove the catalyst plug and seal from the other side of the gun block.
31. Remove the material and catalyst fittings from the rear of the gun block.
32. Unscrew the gun fitting needle housings from both sides of the gun.



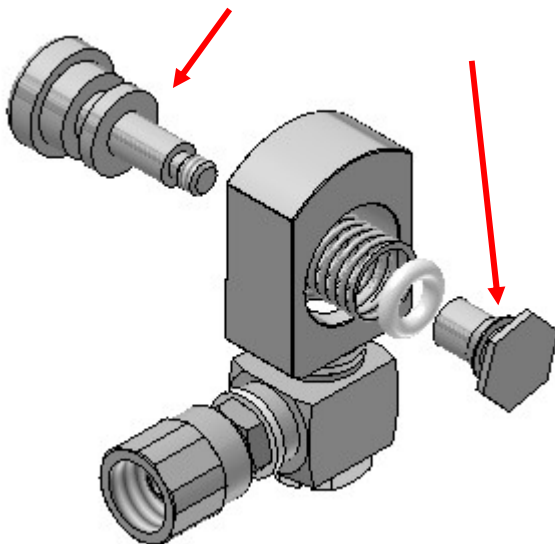
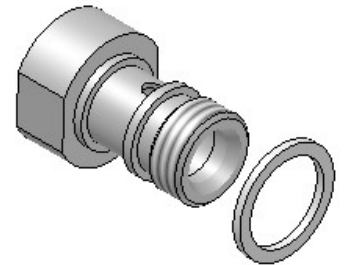
33. Unscrew the packing nut from both needle housings.
34. Remove the O-ring and needle from both needle housings.

## Disassemble Flush Valve

35. Remove the split seal from the flush valve body.
36. Remove the flush valve body from the flush valve neck.



37. Remove the flush valve seal from the flush valve body.
38. Unscrew the flush seal body from the flush valve button.

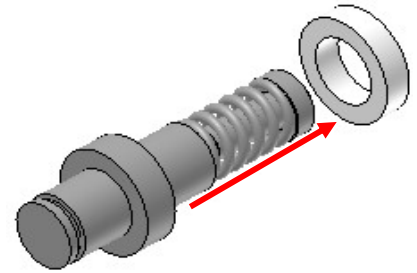
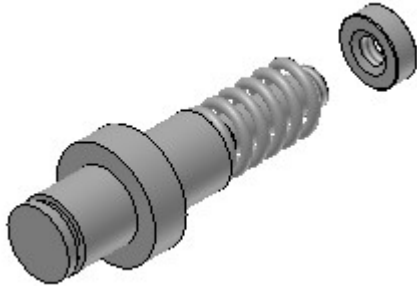


39. Remove the spring.
40. Use a scribe to remove the O-ring from the flush seal body.
41. Discard and replace the flush valve's O-rings and seals.

**Note**     ***Do not replace O-ring (O-K-008) unless it is worn or damaged. This O-ring is designed for use with all solvents. In some cases O-K-008 O-ring can be replaced with the more economical O-ring (O-E-008).***

## Disassemble Catalyst Injector

42. Remove the injector seal from the injector body.
43. Unscrew the plunger retainer from the end of the injector plunger.



44. Remove the compression spring from the injector plunger.
45. Remove the injector plunger from the injector body.
46. Discard all parts to be replaced by the repair kit.
47. Thoroughly clean all remaining parts, inspect for damage and replace as necessary.

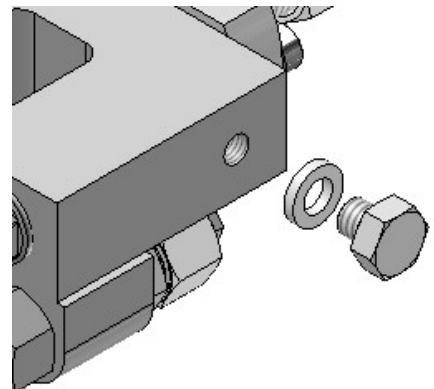
## Reassembling the Gun

### Assemble Gun Handle

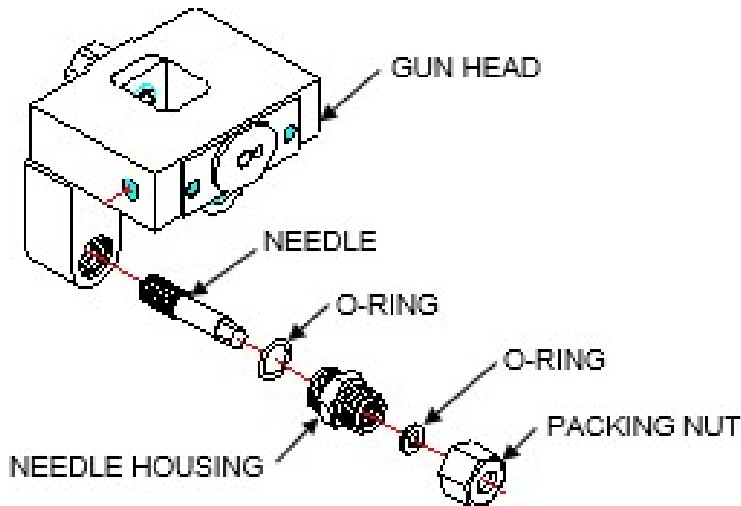
1. Apply lubricant to springs and insert into the gun handle.
2. Thread the spring retainers over the springs and into the gun handle.
3. Slide the spring onto the end of the poppet assembly.
4. Insert the poppet assembly into the valve body.
5. Slide a new O-ring over the poppet assembly and secure with the packing retainer.
6. Screw the assembled valve body into the gun handle.

### Assemble Gun Head

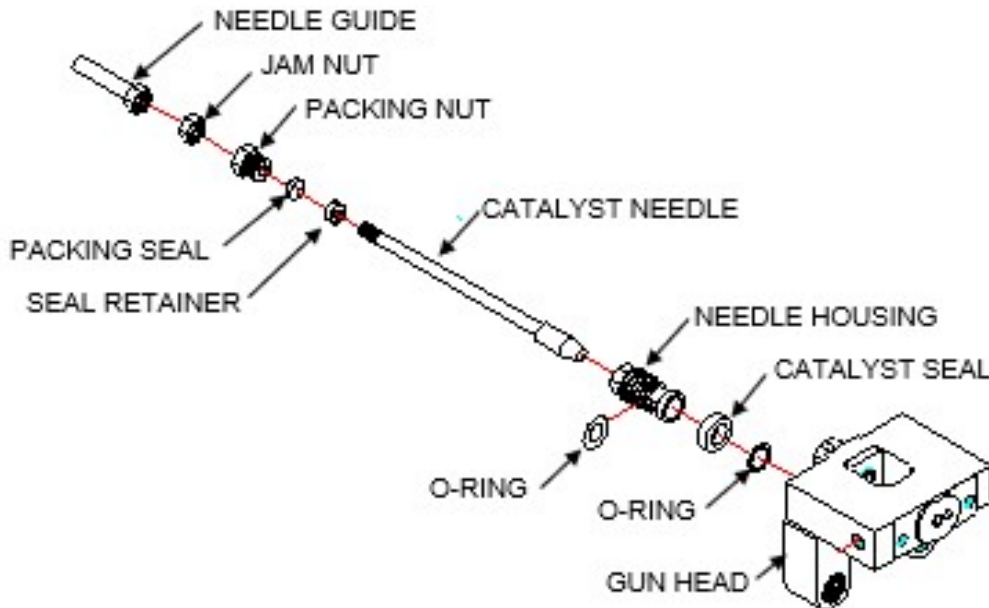
7. Install a new seal onto the plug and then thread the plug into the gun head.
8. Reassemble the flush valve and install into the resin side of the gun head.
9. Install the distribution ring into the mix housing.
10. Install a new O-ring into the mix housing.
11. Insert the catalyst injector assembly into the distribution ring with the spring side facing you.
12. Attach the assembled mix housing to the gun head using the two cap screws.



13. Place new O-rings onto the catalyst and resin fittings.
14. Install both fittings into the gun, making sure they are on the correct sides of the gun head.
15. Install the needle into the needle housing and place a new O-ring onto the end sticking out of the housing.



16. Screw the packing nut onto the needle housing over the O-ring and needle.
17. Repeat steps 15 and 16 for both needle housings.
18. Screw both assembled needle housings into the gun block, one in each side.
19. Install a new O-ring into the catalyst needle seat area of the gun head.
20. Install a new O-ring on the catalyst needle housing and thread into the gun head.
21. Insert the catalyst piston needle into the catalyst needle housing.

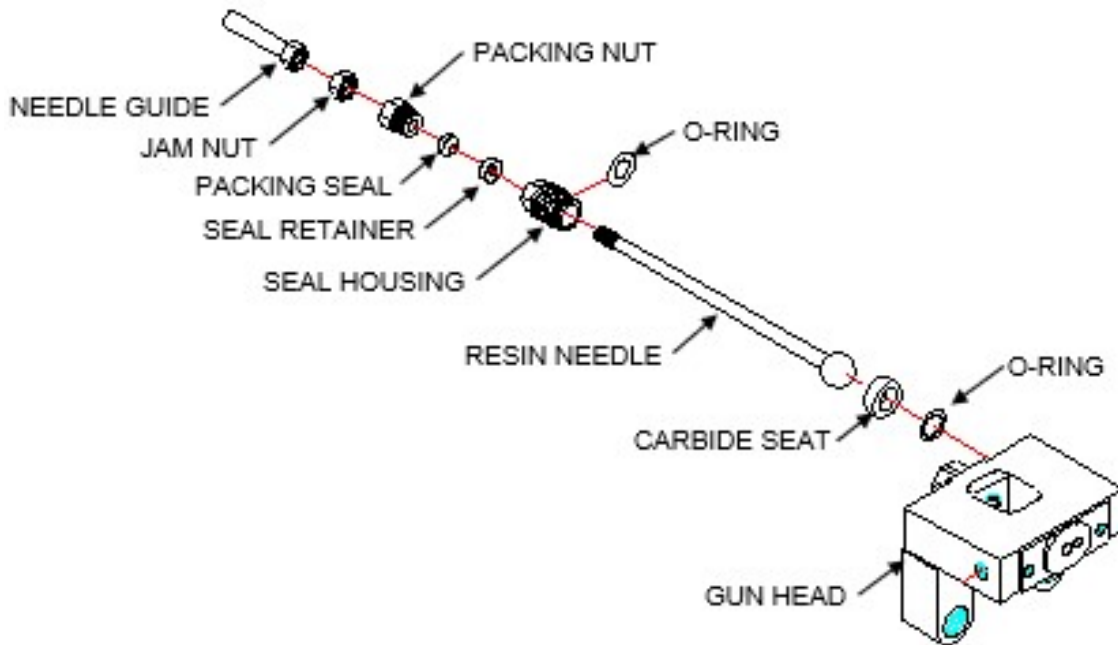


22. Install a seal retainer over the catalyst needle and into the catalyst needle housing.
23. Install a new packing seal over the catalyst needle and into the needle housing.

24. Thread the packing nut into the catalyst needle housing until just over finger-tight; do not overtighten.

**Note**      **Use caution not to bend the catalyst needle while assembling.**

25. Install a new O-ring into the resin needle seat area of the gun head.
26. Firmly thread the carbide seat into the gun head.
27. Install a new O-ring on the seal housing and lightly grease the threads.
28. Install the resin needle through the seal housing.
29. Slide the seal retainer and then the packing seal over the resin needle.



30. Slide the packing nut over the resin needle and thread into the seal housing just over finger tight; do not overtighten.
31. Thread the jam nut then the needle guide onto the resin needle end.
32. Thread the seal housing and resin needle assembly into the gun head.

**Note**      **Use caution not to bend the resin needle during the remainder of assembly.**

## Assemble Flush Valve

33. Place an O-ring onto the flush valve button.

**Note**      **If you are using O-ring part number O-K-008 on the flush button, you do not need to replace unless it is showing obvious signs of wear or damage. This O-ring is specially designed for use with all solvents.**

34. Insert the spring onto the flush valve button.
35. Push the button and spring into the flush valve body.

36. Place an O-ring on the flush seal body.
37. Insert the flush seal body into the end of the flush valve body and screw it onto the button.
38. Place the flush valve body into the flush valve neck.
39. Install the split seal onto the flush valve body.

## Reconnect Component Assemblies

40. Attach the gun head assembly to the gun handle with the cap screw.
41. Slide the trigger into place against the needles and line up the holes with the handle.
42. Push the trigger stud through both the trigger and gun handle and retain with the screw.

## Adjusting Needles

### Gun Adjustment and Start Up

**Note** *Make sure the trigger and trigger bar are not worn, loose, or damaged before adjusting the gun or needle guides.*

1. Adjust the resin needle guide and jam nut so that they will open just before the catalyst needle (never catalyst first).

**Note** *How much you open the resin needle before you open the catalyst needle will depend on the resin viscosity and may have to be changed as the resin temperature changes.*

2. Test the gun by putting 100 psi (7 bar) of air to the catalyst and resin fittings and submerging the gun in water.

## Troubleshooting

Catalyst Problems		
Symptom	Possible Cause	Remedy
Catalyst leaking around needle (inside packing nut)	Packing nut loose	Lightly tighten packing nut
	Packing seal worn or damaged	Replace packing seal
	Excessive pressure in catalyst system	Relieve catalyst pressure from system
	Catalyst needle bent or damaged	Replace catalyst needle
Catalyst leaking around needle housing	O-ring on needle housing worn or damaged	Replace O-ring
Catalyst leaking form the mix housing/front of gun	Catalyst piston needle worn or damaged	Replace needle
	Catalyst seat worn or damaged	Replace catalyst seat



<b>Catalyst Problems</b>		
<b>Symptom</b>	<b>Possible Cause</b>	<b>Remedy</b>
Catalyst leaking form the mix housing/front of gun	O-ring under catalyst seat worn or damaged	Replace O-ring
	Damaged or weak return spring	Replace as needed
	Excessive pressure in catalyst system	Relieve pressure in catalyst system
	Resin needle bent	Replace needle
Catalyst leaking from around plug on side of gun head	Plug seal worn or damaged	Replace plug seal
No catalyst from gun	Trigger is not connecting with catalyst needle	Adjust trigger
	Catalyst injector not operating properly	Inspect injector and adjust or replace as needed
	Blockage in gun block	Disassemble and clean the gun block
	Catalyst pump not operating properly	Refer to catalyst pump manual to adjust pump as needed
Catalyst leaking between fitting and gun block	O-ring on fitting worn or damaged	Replace O-ring
Catalyst leaking from around the catalyst shoot off needle	Packing nut loose	Lightly tighten packing nut
	O-ring worn or damaged	Replace O-ring

<b>Resin Problems</b>		
<b>Symptom</b>	<b>Possible Cause</b>	<b>Remedy</b>
Resin leaking around needle inside needle housing	Resin needle bent	Replace needle
	Packing nut loose	Lightly tighten packing nut
	Packing seal worn or damaged	Replace packing seal
Resin leaking around needle housing	O-ring on needle housing worn or damaged	Replace O-ring
Resin leaking form the mix housing/front of gun	Piston needle worn or damaged	Replace piston needle as needed
	Carbide seat worn or damaged	Replace carbide seat as needed
	O-ring under carbide seat worn or damaged	Replace O-ring as needed
	Damaged or weak return spring	Adjust spring and replace as needed
	Excessive pressure in resin system	Relieve system pressure
No resin coming from gun	Trigger is not pulling resin needle back/open	Adjust trigger as needed
	Gun block obstructed	Clear any blockages from the gun block
	Resin pump malfunctioning	Check resin pump for proper operation

Resin Problems		
Symptom	Possible Cause	Remedy
Resin leaking between fitting and gun block	O-ring on fitting worn or damaged	Replace O-ring
Resin leaking from around the resin shut off needle	Packing nut loose	Lightly tighten packing nut
	O-ring on resin shut off needle worn or damaged	Replace O-ring

Flush Problems		
Symptom	Possible Cause	Remedy
Solvent leaking from around flush button inside flush body	O-ring on flush button worn or damaged	Replace O-ring
Solvent leaking from around flush neck next to gun block	Split seal worn or damaged	Replace split seal
Solvent leaking from between flush neck and flush body	Flush valve seal worn or damaged	Replace flush valve seal
Solvent leaking around elbow flush fitting	Flush swivel elbow fitting loose	Tighten fitting
	Nylon seal worn or damaged	Replace seal
	Flush swivel elbow fitting damaged	Replace fitting
Solvent leaking from mix housing/front of gun	Debris in seal area or damage to flush body	Clean and replace parts as needed
	O-ring on flush seal body worn or damaged	Replace O-ring
	Excessive pressure in flush system	Relieve flush system pressure and set to no more than 80 psi

General Problems		
Symptom	Possible Cause	Remedy
Material leaking from around the mix chamber	Mix housing seal worn or damaged	Replace seal
	Catalyst injector seal worn or damaged	
Air leaking from around poppet needle	Poppet needle retainer loose	Tighten poppet valve body <b>Note Do not overtighten; this will make the poppet needle move slowly or not at all</b>
	O-ring worn or damaged	Replace O-ring

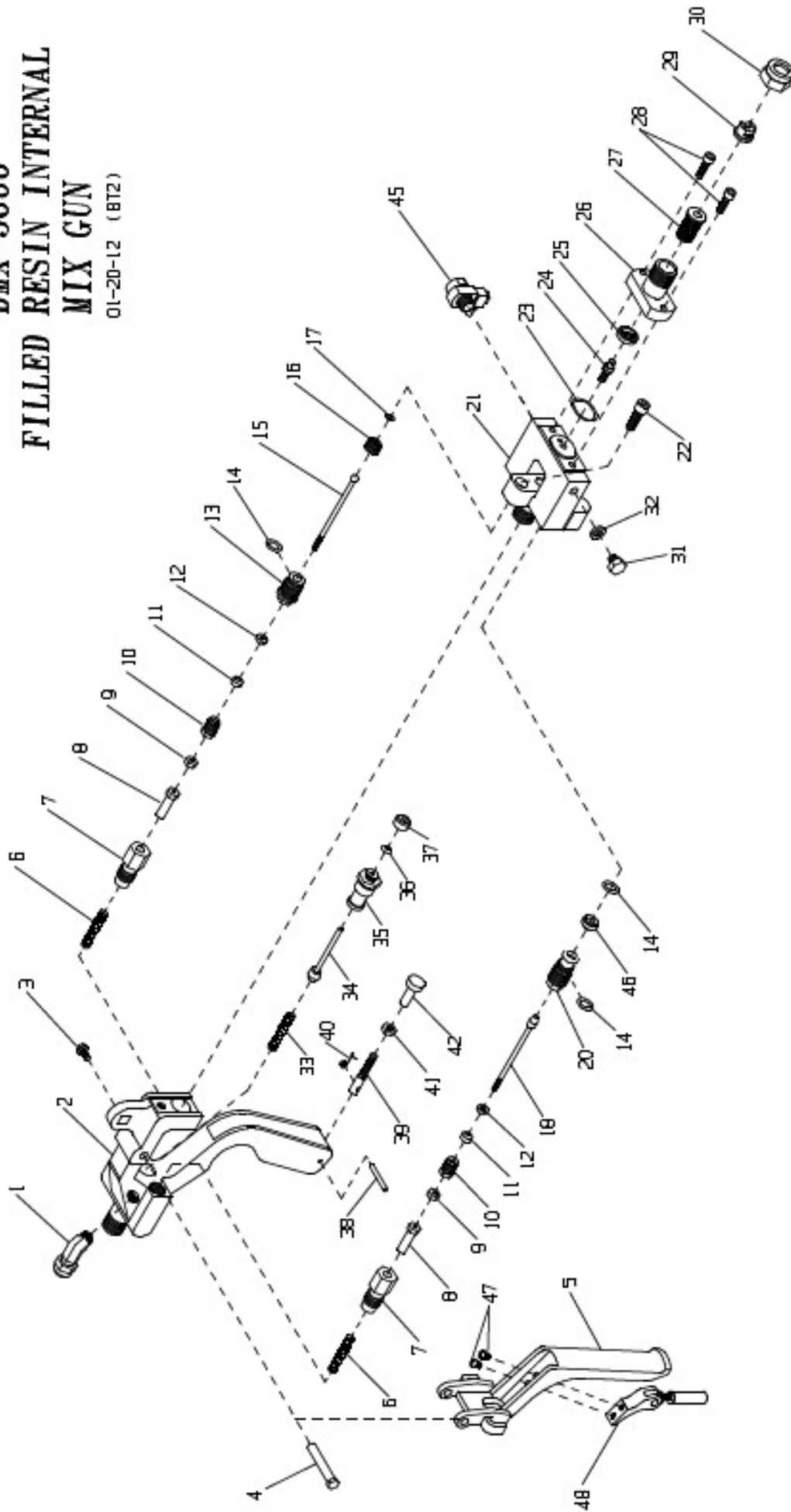
General Problems		
Symptom	Possible Cause	Remedy
Air leaking from around poppet valve body	Poppet valve body loose	Tighten valve body into the gun handle
Air leaking from fitting on handle or to chopper	Retainer too tight or holding valve open	Adjust retainer
	Poppet assembly worn or damaged	Inspect and replace poppet assembly as needed
	Poppet valve body seat area worn or damaged	Inspect and replace parts as needed
Material leaking from around nozzle or nozzle cap	Nozzle cap loose	Tighten nozzle cap <b>Note Do not overtighten or you may damage the turbulent mixer</b>
	Turbulent mixer loose	Hand tighten turbulent mixer; hand tight only
	Turbulent mixer worn or damaged	Replace turbulent mixer as needed
	Front of mix housing damaged	Replace parts as needed
Trigger action stiff or hard	Trigger damaged	Inspect and replace parts as needed
	Trigger stud and screw damaged or dry	Remove and lubricate trigger stud and screw; replace as needed
	Needle guide and springs damaged	Remove and lubricate needle guides and springs; replace as needed
	Spring retainer worn or damaged	Replace parts as needed
	Needles or needle housings dirty	Check needles and needle housings for hardened or sticky material and remove as needed

## Parts Information

The following illustrated parts drawings are included for your reference:

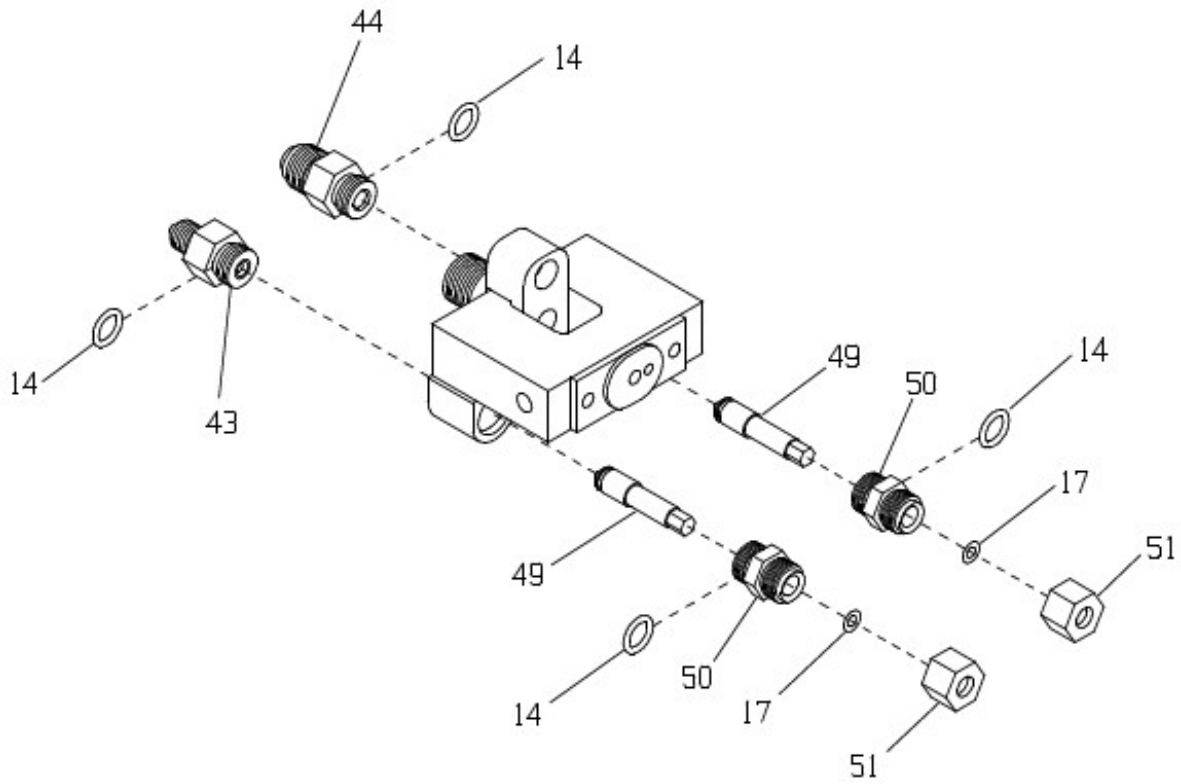
Parts Drawings	
Part Number	Description
DMX-3000	FILLED RESIN INTERNAL MIX GUN
DMX-3000-A	AUTO DURAMAX GUN ASSEMBLY
DMX-3000-ITW	FILLED RESIN INTERNAL MIX GUN
DMX-3000-SIG	FILLED RESIN CHOPPER WITH SIGNAL
DMX-3000-ST	DURAMAX GUN ASSEMBLY – FIT MIX CHAMBER
DMX-3000-W	INTERNAL MIX WETOUT GUN
DMX-3000-W-SIG	INTERNAL MIX WETOUT GUN WITH SIGNAL
DMX-3000-ITW-SK	SEAL KIT – DURAMAX GUN ASSEMBLY
DMX-3000-SK	SEAL KIT – DURAMAX GUN ASSEMBLY
DMX-3000-ST-SK	SEAL KIT – DURAMAX GUN ASSEMBLY

**DMX-3000**  
**FILLED RESIN INTERNAL**  
**MIX GUN**  
01-20-12 (872)

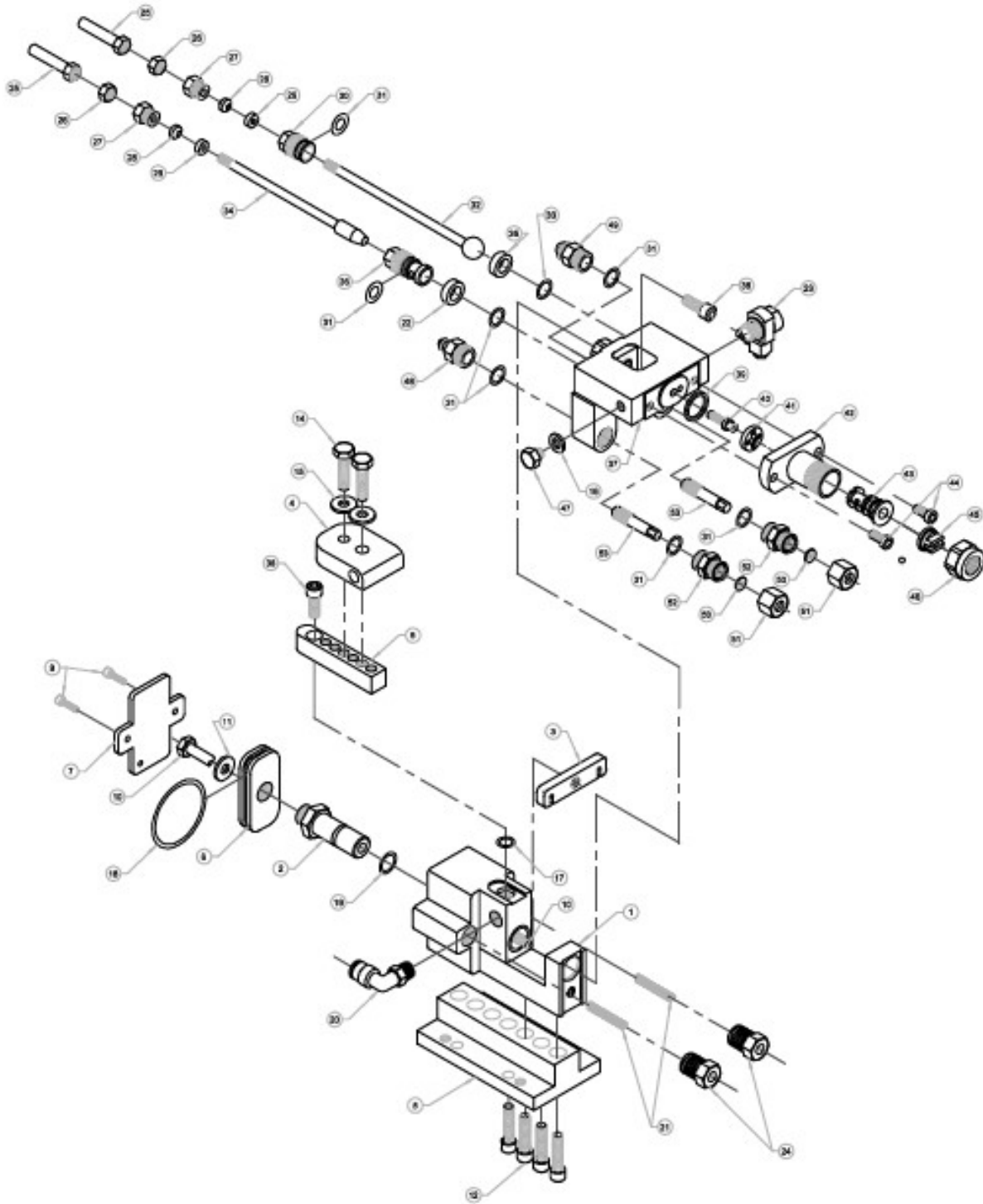


# DMX-3000

## PAGE 2







## MAGNUM VENUS PLASTECH

Automatic DuraMax Gun Assembly

DMX-3000-A

REV A - ITEMS 27, 28, 29 WAS QTY. OF 1 06/10/05 BT2  
REV B - ITEM 37 WAS DMX-3001-01 02/17/09 BT2  
REV C - DELETED ITEM 13, ITEM 38 WAS QTY. OF 1 03/16/10 BT2  
REV D - ITEM 44 WAS F-CS-1025-10 06/19/12 BT2

## Automatic Duramax Gun Assy DMX-3000-A

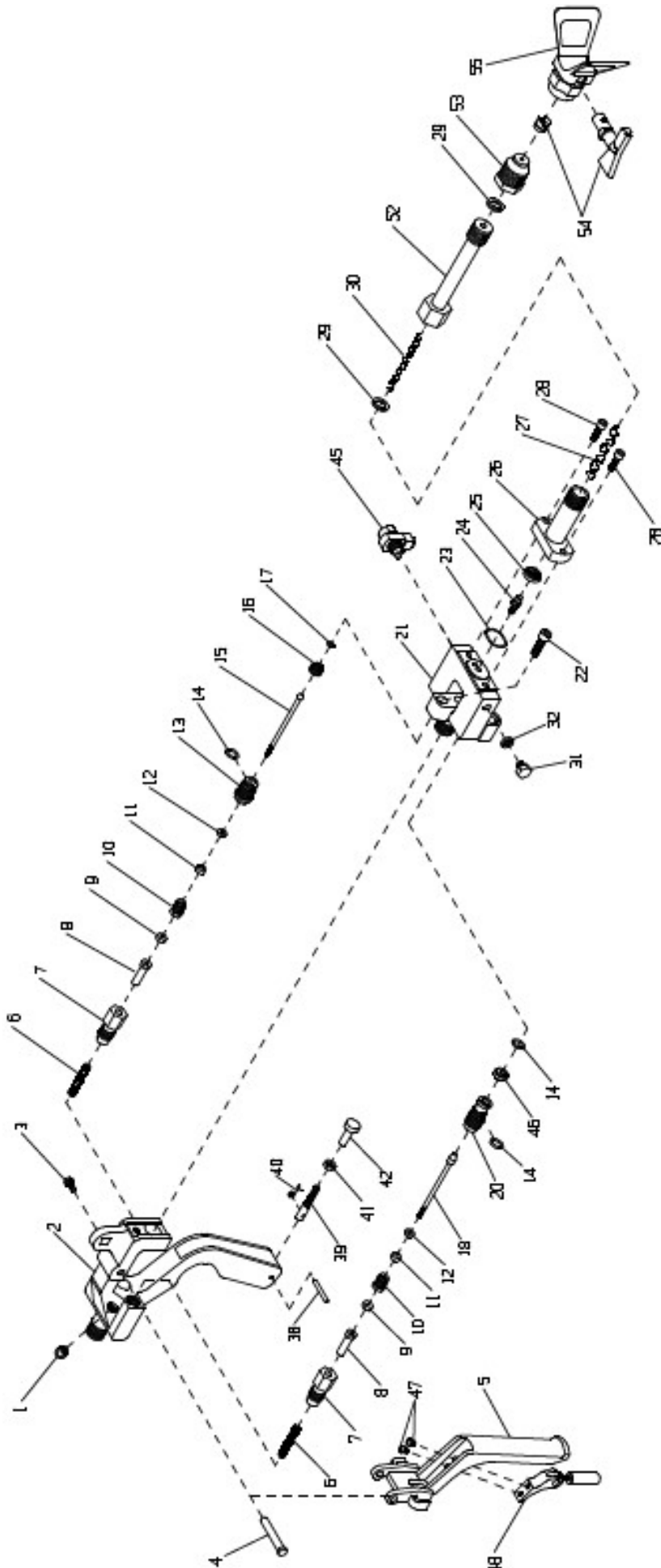
## PARTS LIST

ITEM	PART NO.	QTY	DESCRIPTION
1	MAX-2030-01	1	ACTUATOR BODY
2	MAX-2031	1	PISTON ROD
3	MAX-2032	1	NEEDLE PULL BAR
4	MAX-2033	1	CHOPPER MOUNT SWIVEL
5	MAX-2034	1	CHOPPER MOUNT RAIL
6	MAX-2035	1	PISTON
7	MAX-2036	1	BACK PLATE
8	MAX-2037	1	BASE PLATE
9	F-PH-632-06	2	MACHINE SCREW
10	F-HB-04C-40-GR5	1	HEX CAP SCREW
11	F-FW-04	1	FLAT WASHER
12	F-CS-04C-16	4	SOCKET HEAD CAP SCREW
14	F-HB-04C-16-GR5	2	HEX CAP SCREW
15	F-FW-04-SP	2	WASHER
16	02441-1	1	SEAL
17	O-B-011	1	O-RING
(*) 18	O-E-130	1	O-RING
(*) 19	O-E-013	1	O-RING
20	MPH-2539	1	SWIVEL ELBOW
21	04040-1	2	COMPRESSION SPRING
22	CPR-2012-02	1	CATALYST SEAL
23	5104-01-01	1	FLUSH VALVE ASSY
24	54000-1	2	SPRING RETAINER
25	53900-1	2	NEEDLE GUIDE
26	53800-1	2	HEX NUT
27	MG-1022	2	PACKING NUT
28	MAX-2008	2	PACKING SEAL
29	MAX-2009	2	SEAL RETAINER
30	MAX-2013	1	SEAL HOUSING
31	O-S-012	7	O-RING
32	MAX-2010-01	1	NEEDLE WITH CARBIDE
33	O-T-010	1	O-RING
34	DMX-3008-01	1	PISTON NEEDLE
35	MAX-2011-01	1	CARBIDE SEAT
36	DMX-3009-02	1	CATALYST NEEDLE HOUSING
37	DMX-3001-01-A	1	GUN HEAD
38	F-CS-04C-12	2	SOCKET HEAD CAP SCREW
39	O-S-018	1	O-RING
40	5104-03-01	1	INJECTOR ASSY
41	5104-18-1	1	DISTRIBUTION RING
42	MAX-2017-T	1	MIXER HOUSING
43	5107-27-3	1	TURBULENT MIXER
44	F-CS-1024-10	2	SOCKET HEAD CAP SCREW
45	VFIT-6025	1	FIT TIP
46	8704-4-1	1	NOZZLE CAP
47	53110-1	1	GUN HEAD PLUG
48	DMX-3006-01	1	CATALYST FITTING
49	DMX-3005	1	RESIN FITTING
50	O-T-010	2	O-RING
51	DMX-3002	2	PACKING NUT
52	DMX-3003	2	NEEDLE HOUSING
53	DMX-3004	2	NEEDLE

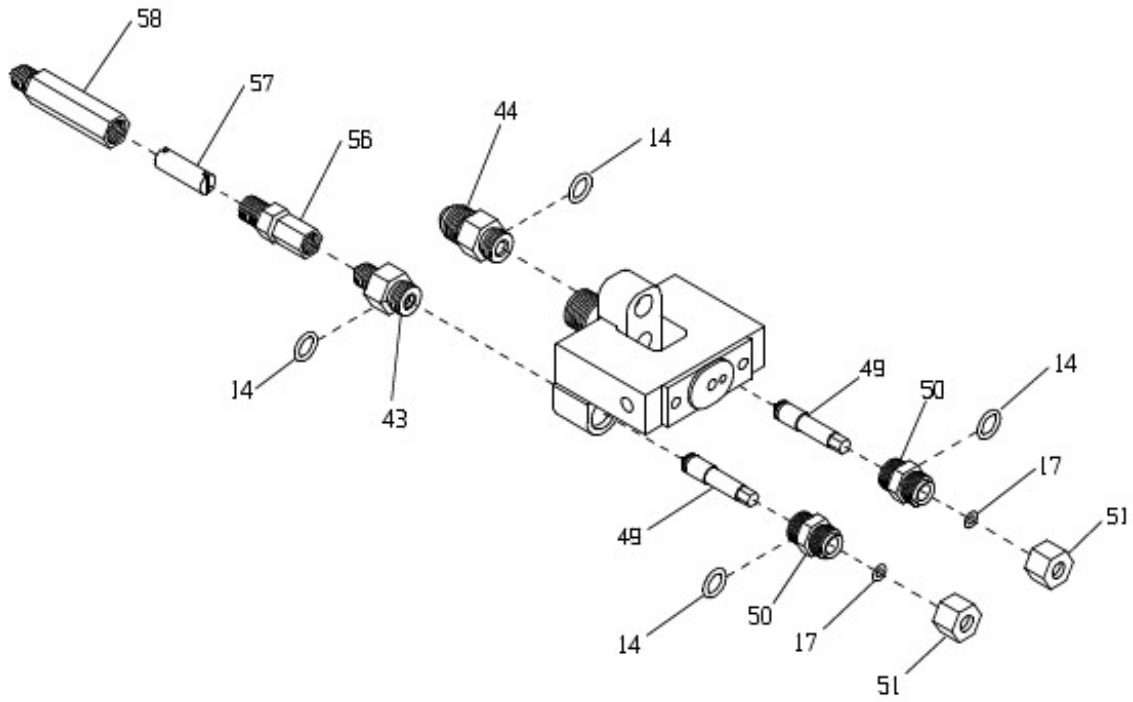
(\*) APPLY A LIGHT COATING OF PARKER "SUPER O-LUBE"  
TO THESE ITEMS UPON ASSEMBLY



**DMX-3000-ITW**  
**FILLED RESIN INTERNAL**  
**MIX GUN**  
10-17-12 (BT2)

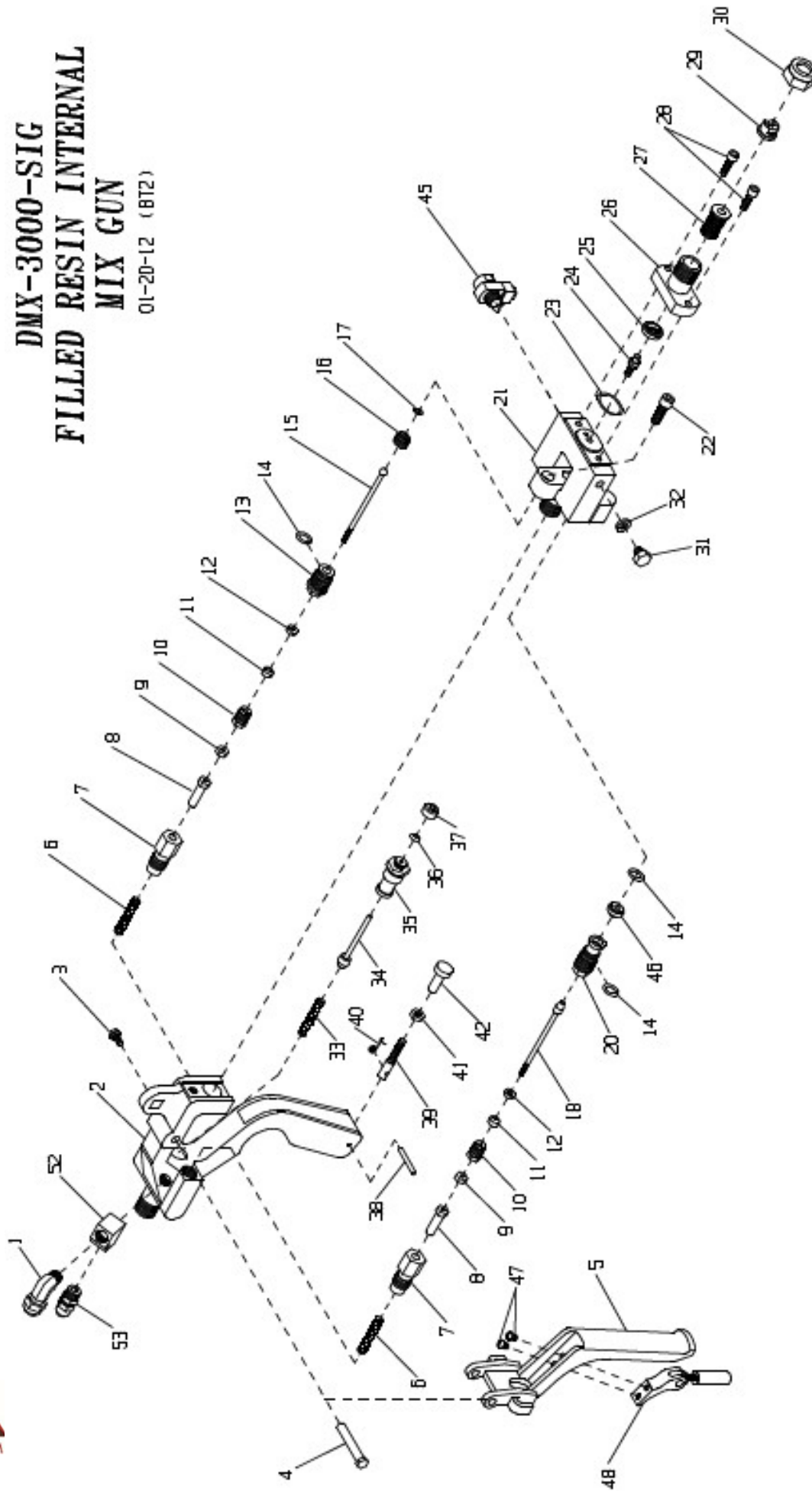


**DMX-3000-ITW**  
**PAGE 2**



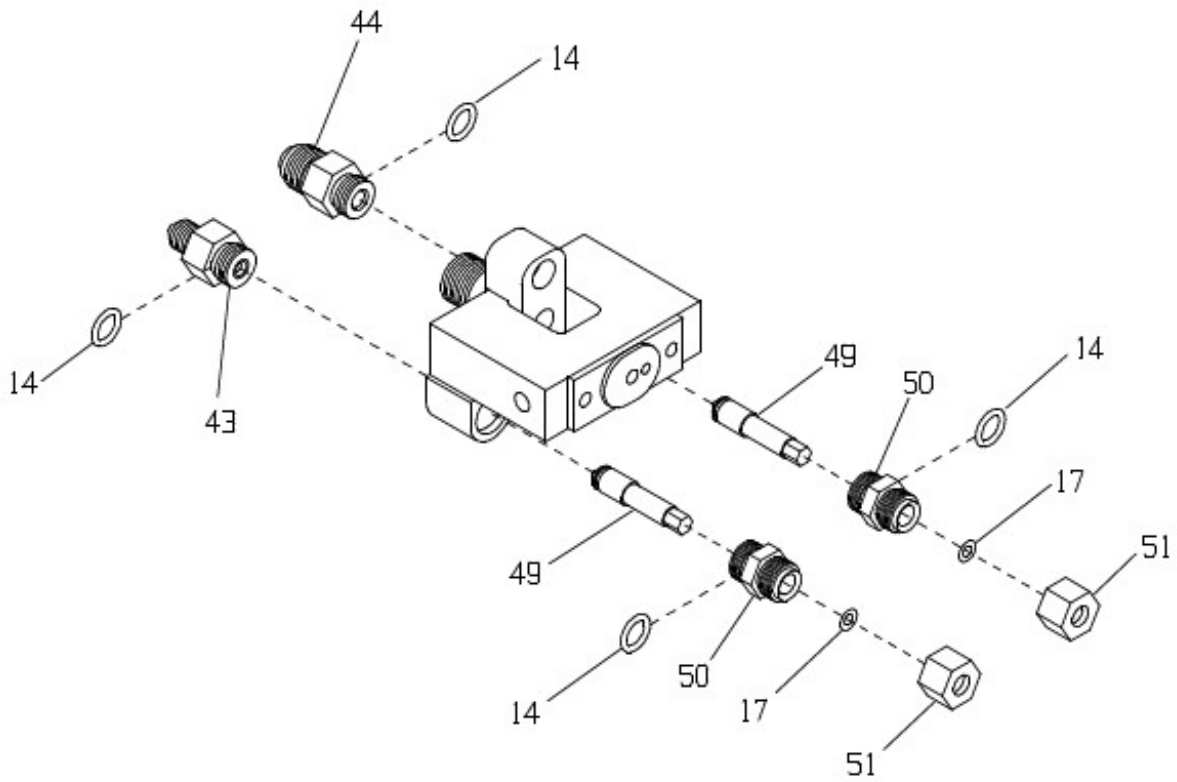


**DMX-3000-SIG  
FILLED RESIN INTERNAL  
MIX GUN**  
01-20-12 (8T2)



# DMX-3000-SIG

## PAGE 2



**DMX-3000-SIG  
DURAMAX GUN  
01-20-12  
PARTS KEY**

ITEM	PART #	DESCRIPTION	QTY	ITEM	PART #	DESCRIPTION	QTY
1	7701-6-18	ELBOW	1	50	DMX-3003	NEEDLE HOUSING	2
2	54350-3	GUN HANDLE	1	51	DMX-3002	PACKING NUT	2
3	00145	SCREW	1	52	PF-ST-02-6R	STREET TEE	1
4	54630-1	STUD	1	53	7701-6-14	TUBE FITTING	1
5	MAX-2040	TRIGGER	1				
6	04039-1	SPRING	2				
7	54000-1	RETAINER	2				
8	53900-1	NEEDLE GUIDE	2				
9	53800-1	JAM NUT	2				
10	MG-1022	PACKING NUT	2				
11*	MAX-2008	PACKING SEAL	2				
12	MAX-2009	SEAL RETAINER	2				
13	MAX-2013	SEAL HOUSING	1				
14*	O-S-012	O-RING	7				
15	MAX-2010-01	NEEDLE	1				
16	MAX-2011-01	CARBIDE SEAT	1				
17*	O-T-010	O-RING	3				
18	DMX-3008-01	PISTON NEEDLE	1				
20	DMX-3009-02	NEEDLE HOUSING (CAT.)	1				
21	DMX-3001-01	GUN HEAD	1				
22	F-CS-04C-12	CAP SCREW	1				
23*	O-S-018	O-RING	1				
24	5104-03-01	INJECTOR	1				
25	5104-1B-1	DIFFUSER	1				
26	MAX-2017-T	MIXER HOUSING	1				
27*	5107-27-3	TURBULENT MIXER	1				
28	F-CS-1024-10	CAP SCREW	2				
29	VFIT-6025	FIT NOZZLE	1				
30	8704-4-1	NOZZLE CAP	1				
31	53110-1	PLUG	1				
32*	02441-1	SEAL	1				
33	04070-1	SPRING	1				
34	MG-2031	NEEDLE	1				
35	54440-1	VALVE BODY	1				
36*	O-S-104A	O-RING	1				
37	54420-1	RETAINER	1				
38	02883-B	PIN	1				
39	56190-1	SCREW	1				
40	04420-1	SPRING	1				
41	F-HN-1024	NUT	1				
42	56100-1	NUT	1				
43	DMX-3006-01	CATALYST FITTING	1				
44	DMX-3005	MATERIAL FITTING	1				
45	5104-01-01	FLUSH VALVE	1				
46	CPR-2012-02	CATALYST SEAT	1				
47	F-MS-832-04	MACHINE SCREW	2				
48	CPR-2060-01	MOUNT	1				
49	DMX-3004	NEEDLE	2				

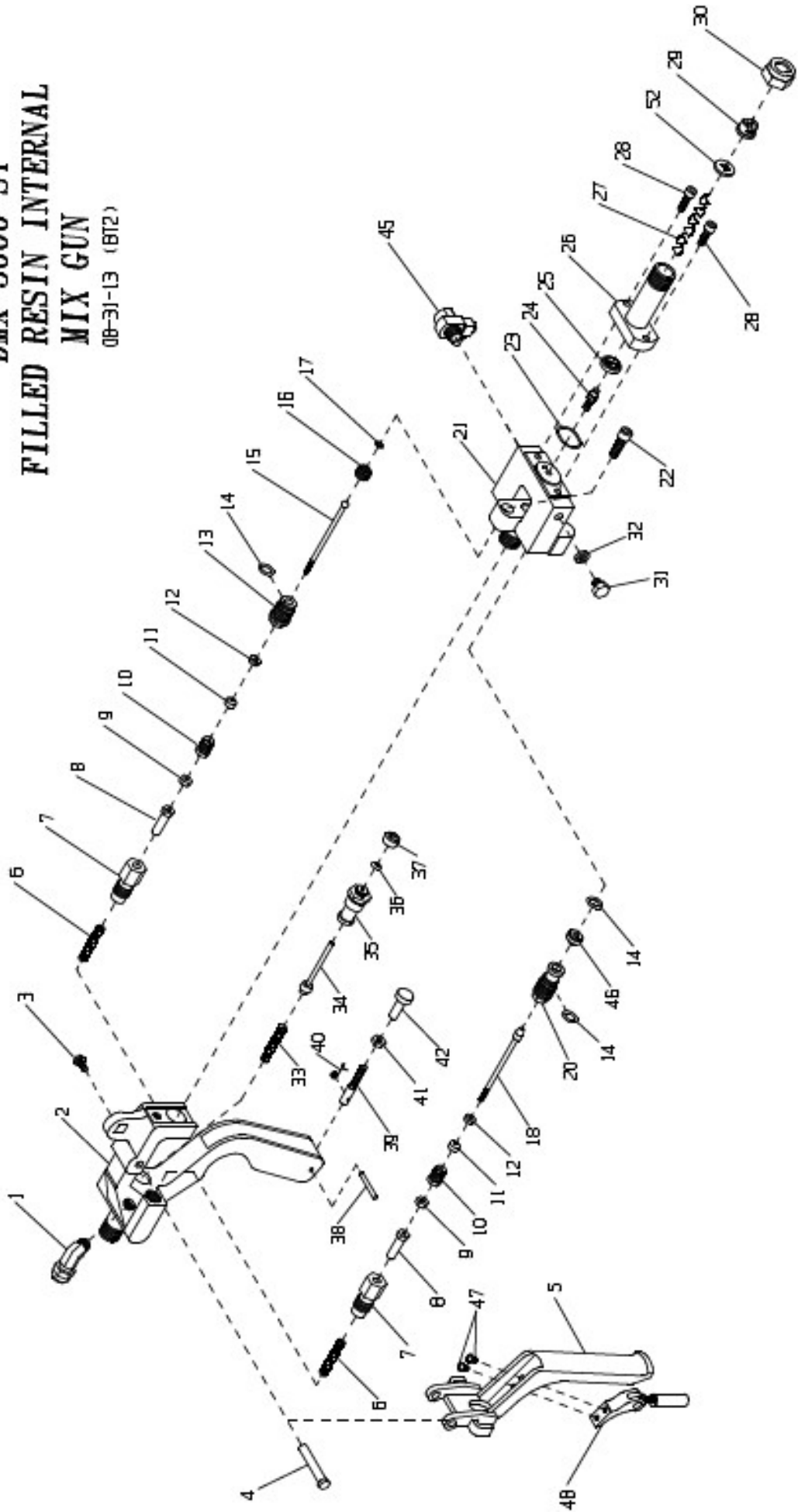
**SEAL KIT SOLD SEPARATELY:**

\*DMX-3000-SK SEAL KIT  
KIT ALSO INCLUDES 5104-13-1 INJECTOR  
SEAL FOR PART 24, 5104-03-01

**OPTIONAL EQUIPMENT:**

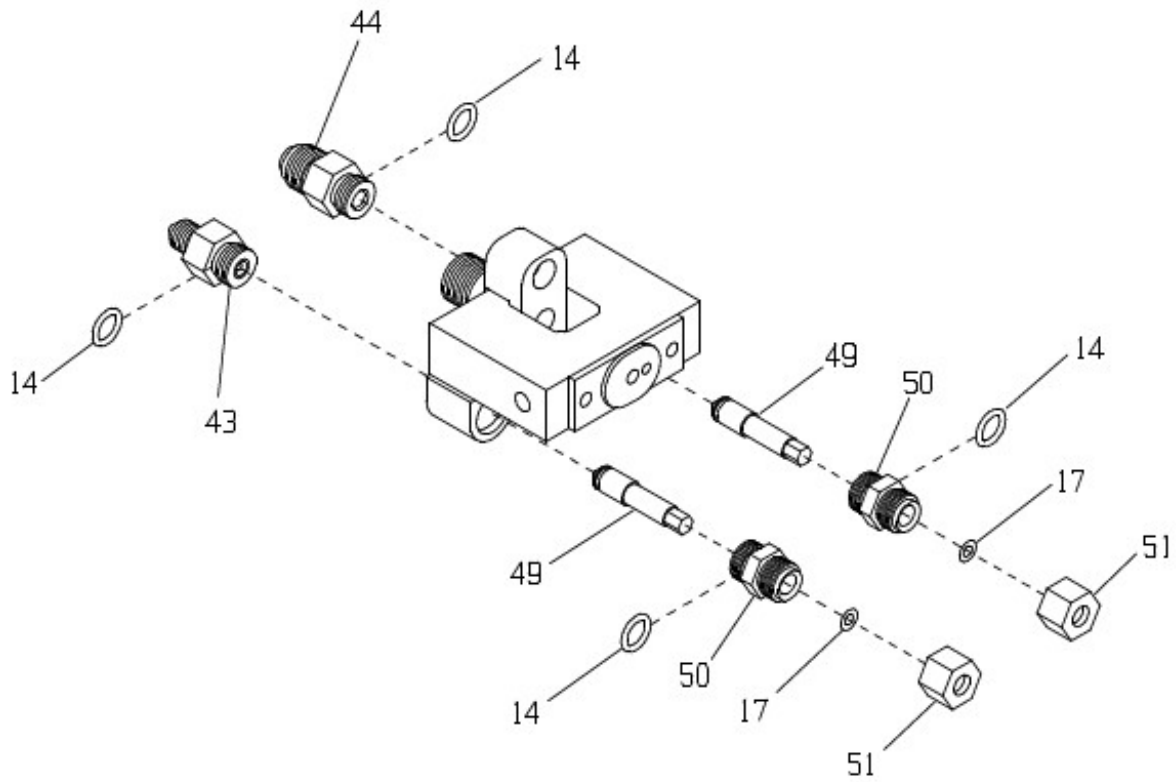
MAX-2017-S STATIC MIXER HOUSING  
VPG-1002 DIFFUSER/GASKET (PLACE BETWEEN TIP AND HOUSING)  
VPG-1003 STATIC MIXER  
5104-07-01 BALL VALVE FLUSH  
DMX-3009-01 CATALYST HOUSING/SEAT ASSEMBLY - INCLUDES ITEM 14, O-S-012 (QTY. 2), ITEM 20, DMX-3009-02, AND ITEM 46, CPR-2012-02  
04040-1 HEAVY SPRING TO REPLACE 04039-1

**DMX-3000-ST**  
**FILLED RESIN INTERNAL**  
**MIX GUN**  
06-31-13 (BT2)



# DMX-3000-ST

## PAGE 2





**DMX-3000-ST  
DURAMAX GUN  
08-30-13  
PARTS KEY**

ITEM	PART #	DESCRIPTION	QTY	ITEM	PART #	DESCRIPTION	QTY
1	7701-6-18	ELBOW	1	50	DMX-3003	NEEDLE HOUSING	2
2	54350-3	GUN HANDLE	1	51	DMX-3002	PACKING NUT	2
3	00145	SCREW	1	52	VPG-1002	DIFFUSER/GASKET	1
4	54630-1	STUD	1				
5	MAX-2040	TRIGGER	1				
6	04039-1	SPRING	2				
7	54000-1	RETAINER	2				
8	53900-1	NEEDLE GUIDE	2				
9	53800-1	JAM NUT	2				
10	MG-1022	PACKING NUT	2				
11*	MAX-2008	PACKING SEAL	2				
12	MAX-2009	SEAL RETAINER	2				
13	MAX-2013	SEAL HOUSING	1				
14*	O-S-012	O-RING	7				
15	MAX-2010-01	NEEDLE	1				
16	MAX-2011-01	CARBIDE SEAT	1				
17*	O-T-010	O-RING	3				
18	DMX-3008-01	PISTON NEEDLE	1				
20	DMX-3009-02	NEEDLE HOUSING (CAT.)	1				
21	DMX-3001-01	GUN HEAD	1				
22	F-CS-04C-12	CAP SCREW	1				
23*	O-S-018	O-RING	1				
24	5104-03-01	INJECTOR	1				
25	5104-18-1	DIFFUSER	1				
26	MAX-2017-S	MIXER HOUSING	1				
27*	VPG-1003	TURBULENT MIXER	1				
28	F-CS-1024-10	CAP SCREW	2				
29	VFIT-6025	FIT NOZZLE	1				
30	8704-4-1	NOZZLE CAP	1				
31	53110-1	PLUG	1				
32*	02441-1	SEAL	1				
33	04070-1	SPRING	1				
34	MG-2031	NEEDLE	1				
35	54440-1	VALVE BODY	1				
36*	O-S-104A	O-RING	1				
37	54420-1	RETAINER	1				
38	02883-8	PIN	1				
39	56190-1	SCREW	1				
40	04420-1	SPRING	1				
41	F-HN-1024	NUT	1				
42	56100-1	NUT	1				
43	DMX-3006-01	CATALYST FITTING	1				
44	DMX-3005	MATERIAL FITTING	1				
45	5104-01-01	FLUSH VALVE	1				
46	CPR-2012-02	CATALYST SEAT	1				
47	F-MS-832-04	MACHINE SCREW	2				
48	CPR-2060-01	MOUNT	1				
49	DMX-3004	NEEDLE	2				

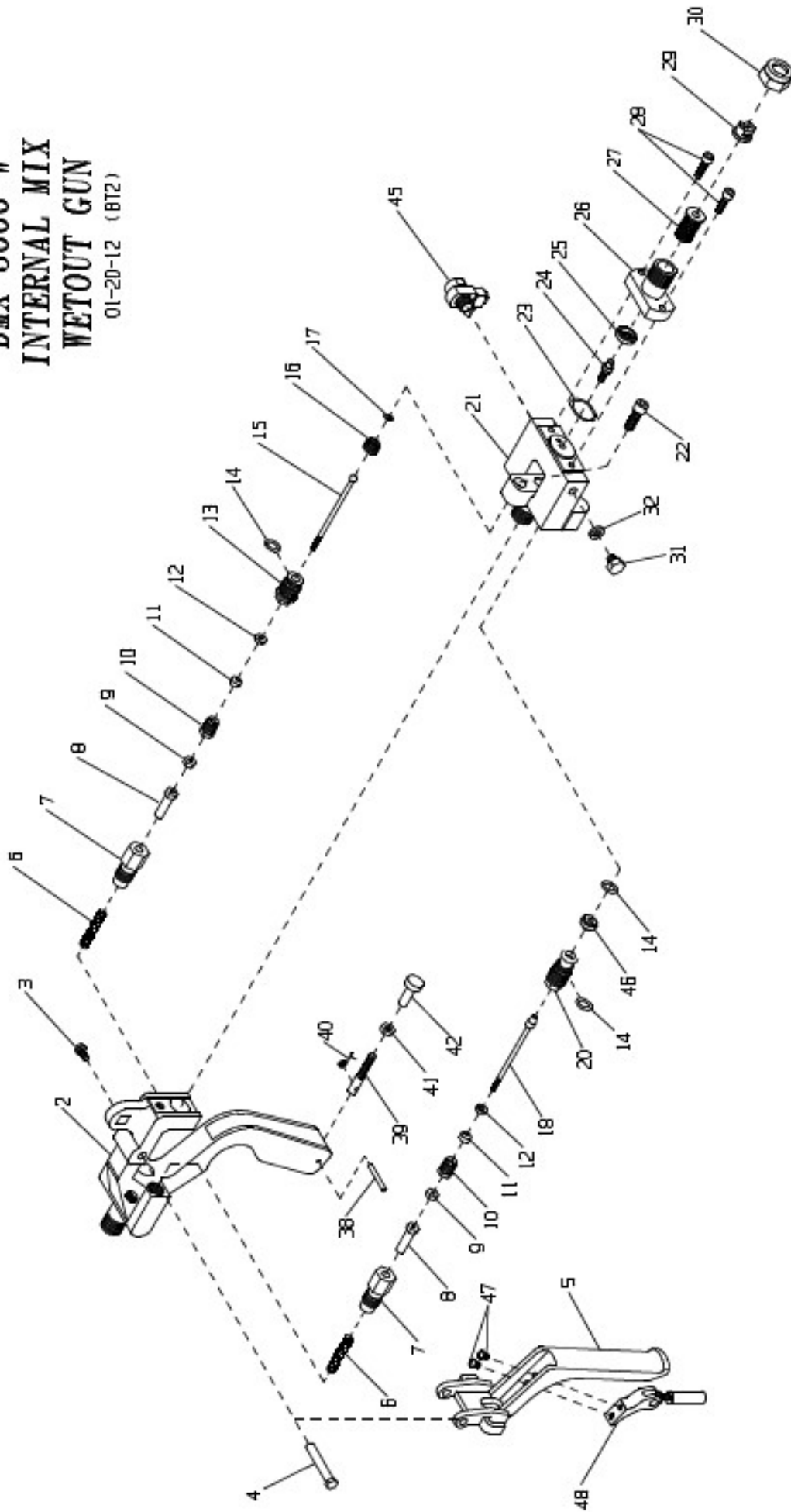
**SEAL KIT SOLD SEPARATELY:**

\*DMX-3000-ST-SK SEAL KIT  
KIT ALSO INCLUDES 5104-13-1 INJECTOR  
SEAL FOR PART 24, 5104-03-01

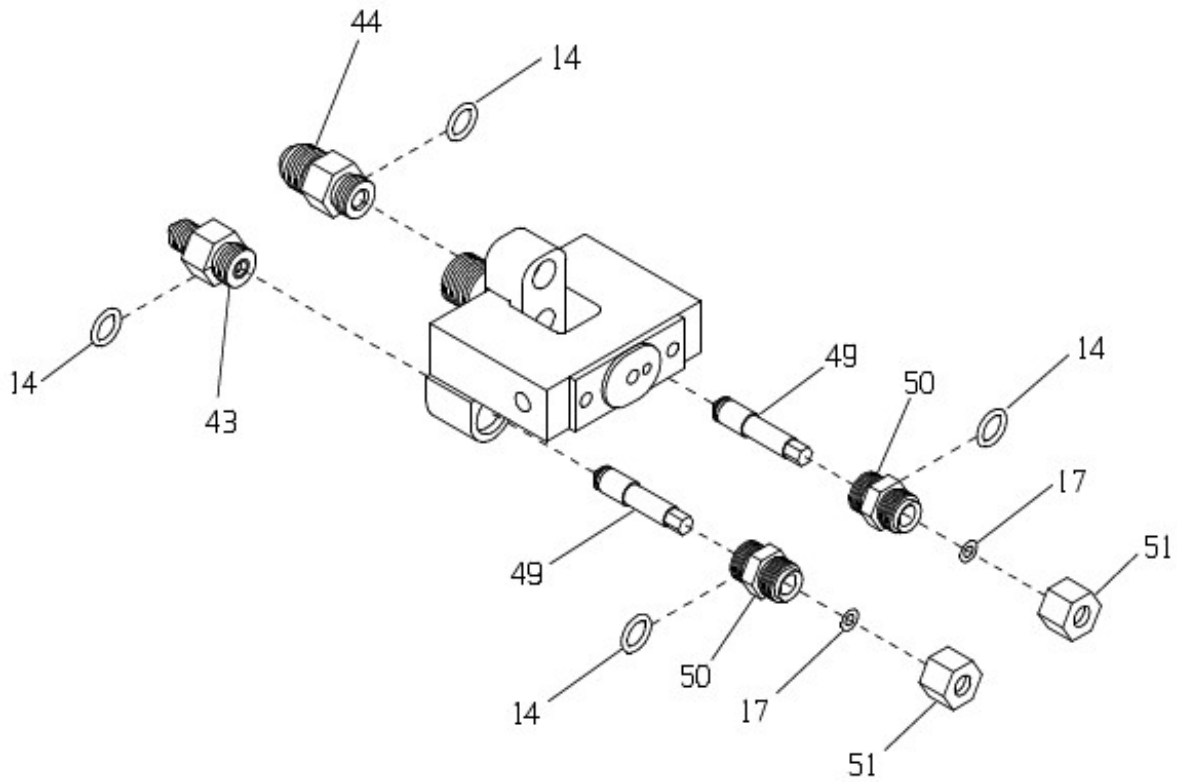
**OPTIONAL EQUIPMENT:**

5104-07-01 BALL VALVE FLUSH  
DMX-3009-01 CATALYST HOUSING/SEAT  
ASSEMBLY - INCLUDES  
ITEM 14, O-S-012 (QTY. 2),  
ITEM 20, DMX-3009-02, AND  
ITEM 46, CPR-2012-02  
04040-1 HEAVY SPRING TO REPLACE  
04039-1

**DMX-3000-W**  
**INTERNAL MIX**  
**WETOUT GUN**  
01-20-12 (BTZ)



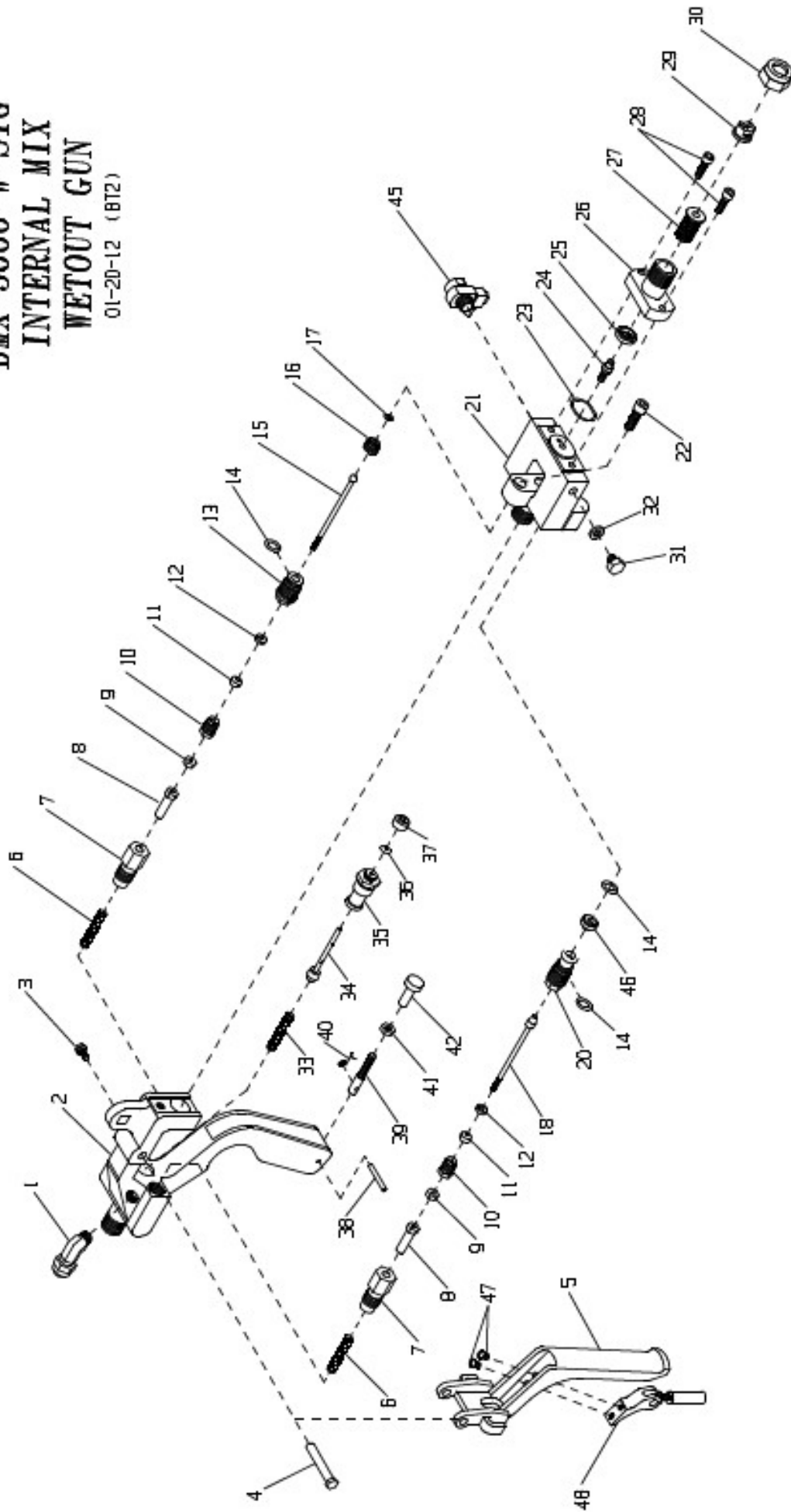
DMX-3000-W  
PAGE 2



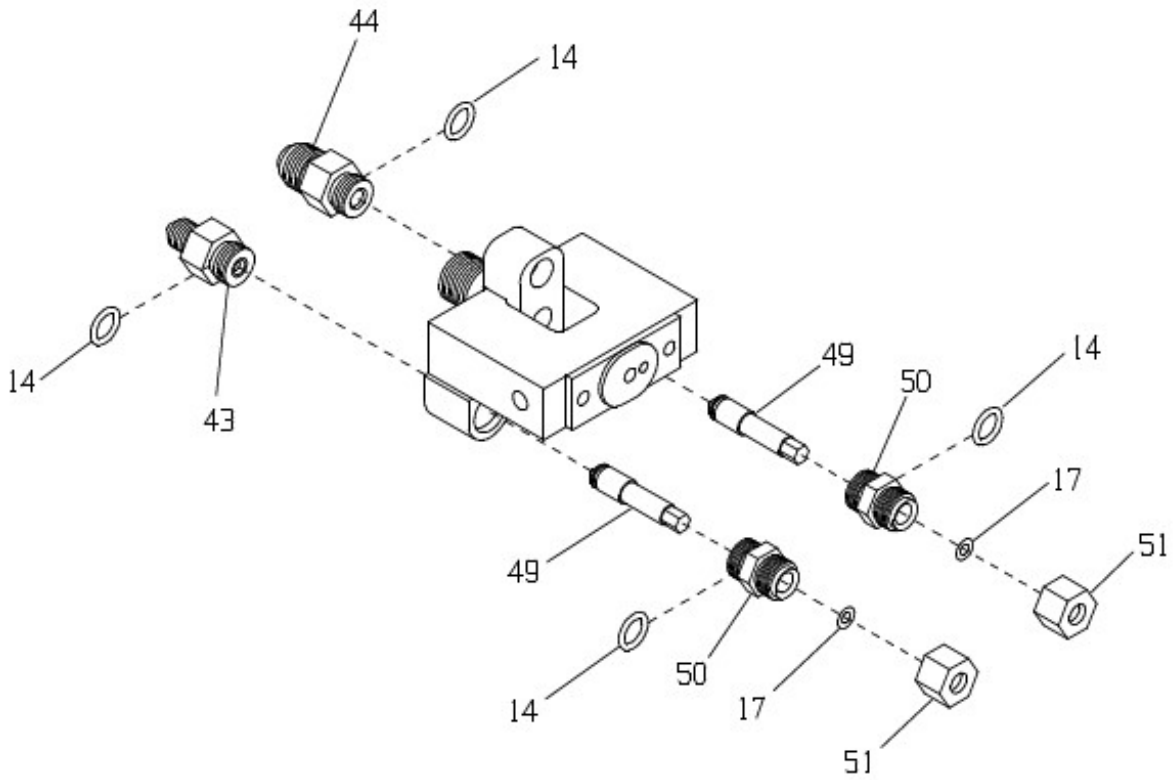
**DMX-3000-W  
WETOUT GUN  
01-20-12  
PARTS KEY**

ITEM	PART #	DESCRIPTION	QTY	SEAL KIT SOLD SEPARATELY:
2	54350-3	GUN HANDLE	1	*DMX-3000-SK SEAL KIT
3	00145	SCREW	1	KIT ALSO INCLUDES 5104-13-1 INJECTOR
4	54630-1	STUD	1	SEAL FOR PART 24, 5104-03-01
5	MAX-2040	TRIGGER	1	
6	04039-1	SPRING	2	
7	54000-1	RETAINER	2	<b>OPTIONAL EQUIPMENT:</b>
8	53900-1	NEEDLE GUIDE	2	
9	53800-1	JAM NUT	2	MAX-2017-S STATIC MIXER HOUSING
10	MG-1022	PACKING NUT	2	
11*	MAX-2008	PACKING SEAL	2	VPG-1002 DIFFUSER/GASKET (PLACE BETWEEN TIP AND HOUSING)
12	MAX-2009	SEAL RETAINER	2	
13	MAX-2013	SEAL HOUSING	1	
14*	O-S-012	O-RING	7	VPG-1003 STATIC MIXER
15	MAX-2010-01	NEEDLE	1	
16	MAX-2011-01	CARBIDE SEAT	1	5104-07-01 BALL VALVE FLUSH
17*	O-T-010	O-RING	3	
18	DMX-3008-01	PISTON NEEDLE	1	DMX-3009-01 CATALYST HOUSING/SEAT ASSEMBLY - INCLUDES
20	DMX-3009-02	NEEDLE HOUSING (CAT.)	1	ITEM 14, O-S-012 (QTY. 2),
21	DMX-3001-01	GUN HEAD	1	ITEM 20, DMX-3009-02, AND
22	F-CS-04C-12	CAP SCREW	1	ITEM 46, CPR-2012-02
23*	O-S-018	O-RING	1	
24	5104-03-01	INJECTOR	1	
25	5104-18-1	DIFFUSER	1	04040-1 HEAVY SPRING TO REPLACE 04039-1
26	MAX-2017-T	MIXER HOUSING	1	
27*	5107-27-3	TURBULENT MIXER	1	
28	F-CS-1024-10	CAP SCREW	2	
29	VFIT-6025	FIT NOZZLE	1	
30	8704-4-1	NOZZLE CAP	1	
31	53110-1	PLUG	1	
32*	02441-1	SEAL	1	
38	02883-8	PIN	1	
39	56190-1	SCREW	1	
40	04420-1	SPRING	1	
41	F-HN-1024	NUT	1	
42	56100-1	NUT	1	
43	DMX-3006-01	CATALYST FITTING	1	
44	DMX-3005	MATERIAL FITTING	1	
45	5104-01-01	FLUSH VALVE	1	
46	CPR-2012-02	CATALYST SEAT	1	
47	F-MS-832-04	MACHINE SCREW	2	
48	CPR-2060-01	MOUNT	1	
49	DMX-3004	NEEDLE	2	
50	DMX-3003	NEEDLE HOUSING	2	
51	DMX-3002	PACKING NUT	2	

**DMX-3000-W-SIG**  
**INTERNAL MIX**  
**WETOUT GUN**  
01-20-12 (872)



DMX-3000-W-SIG  
PAGE 2



**DMX-3000-W-SIG  
WETOUT GUN  
01-20-12  
PARTS KEY**

ITEM	PART #	DESCRIPTION	QTY	ITEM	PART #	DESCRIPTION	QTY
1	WPH-2534	ELBOW	1	50	DMX-3003	NEEDLE HOUSING	2
2	54350-3	GUN HANDLE	1	51	DMX-3002	PACKING NUT	2
3	00145	SCREW	1	<b>SEAL KIT SOLD SEPARATELY:</b>			
4	54630-1	STUD	1	*DMX-3000-SK SEAL KIT			
5	MAX-2040	TRIGGER	1	KIT ALSO INCLUDES 5104-13-1 INJECTOR			
6	04039-1	SPRING	2	SEAL FOR PART 24. 5104-03-01			
7	54000-1	RETAINER	2	<b>OPTIONAL EQUIPMENT:</b>			
8	53900-1	NEEDLE GUIDE	2				
9	53800-1	JAM NUT	2				
10	MG-1022	PACKING NUT	2				
11*	MAX-2008	PACKING SEAL	2	MAX-2017-S	STATIC MIXER HOUSING		
12	MAX-2009	SEAL RETAINER	2	VPG-1002	DIFFUSER/GASKET (PLACE BETWEEN TIP AND HOUSING)		
13	MAX-2013	SEAL HOUSING	1	VPG-1003	STATIC MIXER		
14*	0-S-012	O-RING	7	5104-07-01	BALL VALVE FLUSH		
15	MAX-2010-01	NEEDLE	1	DMX-3009-01	CATALYST HOUSING/SEAT ASSEMBLY - INCLUDES ITEM 14, 0-S-012 (BTY. 2), ITEM 20, DMX-3009-02, AND ITEM 46, CPR-2012-02		
16	MAX-2011-01	CARBIDE SEAT	1	04040-1	HEAVY SPRING TO REPLACE 04039-1		
17*	0-T-010	O-RING	3				
18	DMX-3008-01	PISTON NEEDLE	1				
20	DMX-3009-02	NEEDLE HOUSING (CAT.)	1				
21	DMX-3001-01	GUN HEAD	1				
22	F-CS-04C-12	CAP SCREW	1				
23*	0-S-018	O-RING	1				
24	5104-03-01	INJECTOR	1				
25	5104-18-1	DIFFUSER	1				
26	MAX-2017-T	MIXER HOUSING	1				
27*	5107-27-3	TURBULENT MIXER	1				
28	F-CS-1024-10	CAP SCREW	2				
29	VFIT-6025	FIT NOZZLE	1				
30	8704-4-1	NOZZLE CAP	1				
31	53110-1	PLUG	1				
32*	02441-1	SEAL	1				
33	04070-1	SPRING	1				
34	54501-1	NEEDLE	1				
35	54440-1	VALVE BODY	1				
36*	0-S-104A	O-RING	1				
37	54420-1	RETAINER	1				
38	02883-8	PIN	1				
39	56190-1	SCREW	1				
40	04420-1	SPRING	1				
41	F-HN-1024	NUT	1				
42	56100-1	NUT	1				
43	DMX-3006-01	CATALYST FITTING	1				
44	DMX-3005	MATERIAL FITTING	1				
45	5104-01-01	FLUSH VALVE	1				
46	CPR-2012-02	CATALYST SEAT	1				
47	F-MS-832-04	MACHINE SCREW	2				
48	CPR-2060-01	MOUNT	1				
49	DMX-3004	NEEDLE	2				

DMX-3000-ITW-SK  
SEAL KIT














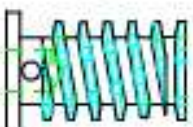
- 2 PCS  MAX-2008 PACKING SEAL
- 1 PC  O-E-007 O-RING
- 1 PC  O-E-008 O-RING  
\*DO NOT GREASE THIS O-RING\*
- 3 PCS  O-T-010 O-RING
- 7 PCS  O-S-012 O-RING
- 1 PC  O-S-018 O-RING
- 1 PC  5104-13-1 INJECTOR SEAL
- 1 PC  02441-1 GUN HEAD PLUG SEAL
- 2 PCS  02149-1 NOZZLE SEAL
- 2 PCS  7304-3-1 NYLON SEAL
- 1 PC  5104-21-1 SPLIT SEAL
- 1 PC  5104-26-1 FLUSH VALVE SEAL
- 1 PC  VPG-1003 MIXER ELEMENT



1 PC MIX-1080  
MIXER ELEMENT



DMX-3000-SK  
SEAL KIT

2 PCS		MAX-2008 PACKING SEAL
1 PC		O-S-006 O-RING
1 PC		O-E-007 O-RING
1 PC		O-E-008 O-RING *DO NOT GREASE THIS O-RING*
1 PC		O-S-104A O-RING
3 PCS		O-T-010 O-RING
7 PCS		O-S-012 O-RING
1 PC		O-S-018 O-RING
1 PC		5104-13-1 INJECTOR SEAL
1 PC		02441-1 GUN HEAD PLUG SEAL
2 PCS		7304-3-1 NYLON SEAL
1 PC		5104-21-1 SPLIT SEAL
1 PC		5104-26-1 FLUSH VALVE SEAL
1 PC		5107-27-3 TURBULENT MIXER

DMX-3000-ST-SK  
SEAL KIT

- 2 PCS  MAX-2008 PACKING SEAL
- 1 PC  O-S-006 O-RING
- 1 PC  O-E-007 O-RING
- 1 PC  O-E-008 O-RING  
\*DO NOT GREASE THIS O-RING\*
- 1 PC  O-S-104A O-RING
- 3 PCS  O-T-010 O-RING
- 7 PCS  O-S-012 O-RING
- 1 PC  O-S-018 O-RING
- 1 PC  5104-13-1 INJECTOR SEAL
- 1 PC  02441-1 GUN HEAD PLUG SEAL
- 2 PCS  7304-3-1 NYLON SEAL
- 1 PC  5104-21-1 SPLIT SEAL
- 1 PC  5104-26-1 FLUSH VALVE SEAL
- 1 PC  VPG-1002 DIFFUSER
- 1 PC  VPG-1003 MIXER ELEMENT





**CORPORATE HEADQUARTERS**

2030 Falling Waters Rd, Suite 350, Knoxville, TN 37922 · USA · Tel: (865) 686-5670

**DISTRIBUTION AND PURCHASING**

642 Barbrow Ln, Knoxville, TN 37932 · USA · Tel: (865) 684-4416

**TECHNOLOGY CENTER AND MANUFACTURING**

1862 Ives Ave, Kent, WA 98032 · USA · Tel (253) 854-2660 · Fax (253) 854-1666

E-mail: [info@mvpind.com](mailto:info@mvpind.com)

For a list of international distributors, visit our website at :

[www.mvpind.com/mvp-international](http://www.mvpind.com/mvp-international)